

DACOTAH PRAIRIE MUSEUM

2 0 1 6
A N N U A L
R E P O R T





Our Mission

To facilitate conversation of the prairie and its people, cultivate insight, and curate its collections as a catalyst for inter-generational exchanges to inspire children, connect families, and build community through education, programming, exhibits, and its collections.

Amended & Approved 5/26/15

Our Vision

The Dacotah Prairie Museum, a non-profit, permanent learning center in service to all people, is committed to the continued growth of its collection of material evidence representing the ongoing history of its region. This collection will be used by present and future generations to study and interpret the lives and accomplishments of previous generations inhabiting the Dakota Prairie. Through these endeavors the Museum will continue to advance itself as a cultural, educational and economic asset to South Dakota.

Our Values

Respect: For people, their stories, their artifacts

Excellence: In personal and institutional performance

Achievement: Through timely accomplishment of stated goals

Responsibility: To ourselves, to each other, to the institution and to the public

Fairness: In judgment and decision making

Integrity: In preservation and presentation



2016 Board of Trustees

David Didreckson, President
Wes Elliott, Vice President
Mike McCafferty, Secretary
Gayle Bortnem
Kathleen Daly
Jan Erickson
Melissa Erlenbusch
Laura Kramp
Casey Weismantel
Duane Sutton (County Commissioner)

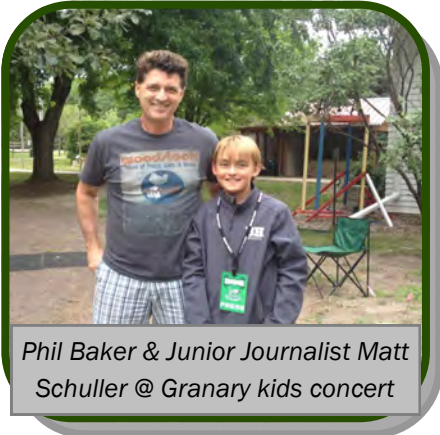
2016 DPM Foundation

Nancy Clark-North, President
Carmel Heyd, Vice-President
Kaye DeYoung, Treasurer
Allen Gates
Jason Pettigrew
Cindy Schick

Museum Staff

Sue Gates, Director
Sherri Rawstern, Curator of Education
Lora Schaunaman, Curator of Exhibits
Jackie Ormand, Curator of Collections
Patricia Kendall, Office/Gift Shop Manager
Mary Locken Baird, Curatorial Assistant
Marianne Marttila-Klipfel, Curatorial Assistant
Dick Schooley, Custodian

Highlights from 2016



Phil Baker & Junior Journalist Matt Schuller @ Granary kids concert



Spelling Bee at Living History Fall Festival



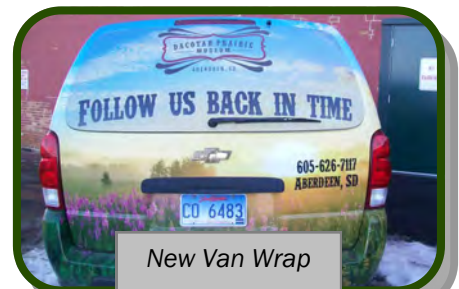
Traveling Toys Exhibit



Football exhibit opening/
remodel before & after



Art workshops for kids



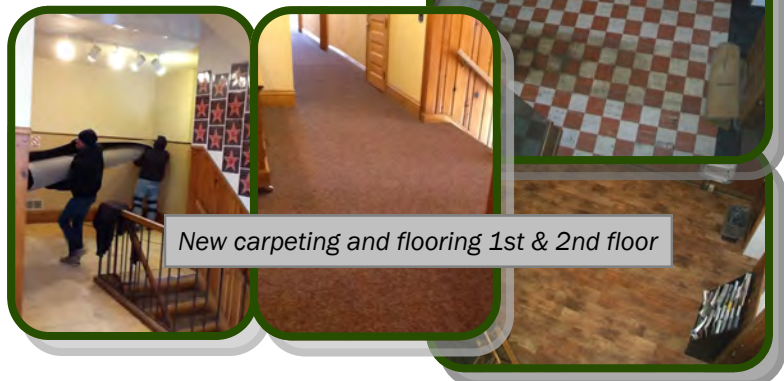
New Van Wrap



Chinese Artist Qin Bailan



Volunteers at Holiday Open House



New carpeting and flooring 1st & 2nd floor

History of the Dacotah Prairie Museum

The idea for a museum in Aberdeen originated in 1938 when John Murphy, a Northern State College professor, and Marc Cleworth, a salesman, created the Northern South Dakota History Museum, which was housed in the Central building on Northern's campus.

This museum closed in 1941 when space was needed on campus to train WWII glider pilots. The nearly 500 artifacts collected were either returned to donors or placed in storage where they remained until 1970 when they were added to the collection of the new Dacotah Prairie Museum.

A New Museum is Born

The idea of a museum resurfaced in 1963 when a group of past presidents of the American Association of University Women (AAUW) met to consider possible community projects for the group. By 1964 the AAUW committee, along with representatives of other community groups, had chosen a museum as their project and had begun looking for possible sites.

In April 1968, the Aberdeen Parks and Recreation Department offered the Anderson Recreation Center (now Senior Center) as a temporary home for a museum. The Museum's board of directors accepted the offer and, in 1969 opened the Dacotah Prairie Museum, but the search for a permanent site continued.

The Museum Finds a Home

On March 11, 1970, Fred Hatterscheidt, a local businessman, offered the building at 21 South Main to the County for use as a museum. The County



Commissioners accepted the offer and by mid-summer renovations to the building began.

On October 25, 1970, the Dacotah Prairie Museum opened the doors of its new home to the public. Governor Frank Farrar spoke at the opening ceremony.

In 1970 the Museum's exhibit area included only portions of the first floor, as it shared the building with several other tenants. As the decade progressed,

the Museum expanded its exhibit space to the entire first floor and half of the second. By 1980 the Dacotah Prairie Museum occupied the entire building. Staff and volunteers worked to ready new found spaces to accommodate staff, exhibits and collection storage.

The 1980s and 1990s

During the 1980s and 1990s the Museum continued to define itself. A mission statement was adopted, and policies of operation were put into place. Staff numbers increased, as did the Museum's tax-supported budget. The Dacotah Prairie Museum Foundation was incorporated in 1985 to assist the Museum in raising outside funds to supplement the annual budget.

During these two decades, several professional assessments were conducted to help the Museum improve its collection management methods, maintain the integrity of its historic building, and strengthen its overall operations.

2000 and Beyond

Renovations to the building's exterior and its major first floor gallery spaces were the focus of work during the early years of this period. The feasibility of an expansion project to double DPM's size was explored in 2007—2008. Despite a positive response from the community, a downturned economy postponed action on the project. To compensate, upgrades to existing spaces were made to maximize their effectiveness.



Unexpected New Space

In 2012 John Sieh, founder and owner of the Granary Rural Cultural Center, donated the Granary to DPM/Brown County. DPM utilizes the 2.3 acre facility from April—October for a variety of art and heritage related activities for audiences of all ages and interests.

Director's Report

"The more you know about the past, the better prepared you are for the future."

~~Theodore Roosevelt~~

Society expects museums to provide accurate and unbiased information about the past, so it can, through contemplation and conversation, better understand the events that have not only shaped the present but will define the future. Dacotah Prairie Museum works diligently to do just that for its audiences, no matter their age.

The exhibits mounted throughout 2016 highlighted diverse areas of interest including art, sports, life styles, and the science of mechanical toys and could be found both at the museum and in numerous venues throughout the community.

The educational programs delivered by DPM staff mirrored the exhibit activities with tours of new exhibits, innovative classroom activities, and themed camps to reinforce the history lessons presented in the exhibits.

Local and area teachers have incorporated DPM programs into their classroom curriculum, and staff made a record 333 visits to classes during 2016. Young audiences continued to discover the museum as part of their daycare or preschool experiences through field trips and staff visits. Weekend visitors include many of these students who eagerly act as proud tour guides for parents and grandparents.

Exhibit and education staff depend on DPM's vast collection of artifacts and archival material when developing new offerings, so it is vital that the overall collection be easily accessible for use. The collection staff and volunteers are diligent in their efforts to track all collection movement from accession, to storage, to display so that the location of artifacts is up to date. Nearly 600 new items were accepted into the collection, over 100 were removed due to condition or relevance to mission, and information on nearly 1,200 more was added to the PastPerfect electronic collection management tool used by DPM.

Facility Improvements

A new exhibit in the second floor "maze" area dictated a reconfiguration of that space, which included removing a wall added in the late 1970s, upgrading lighting and wiring, installing new carpet and security features. The end-resulting gallery offers visitors a much improved viewing experience with more space to maneuver through the exhibit. LED lights were installed both on the ceiling and in wall cases.

New carpet was also installed in the second floor elevator lobby area and the east hall as part of the renovations. Later in the year, the second floor offices were painted and re-carpeted. New window blinds were installed in these offices, the collection office and library area.

Several original locks that required the use of skeleton keys were replaced with modern dead bolt locks keyed to use an existing master key.

Improvements on the first floor included new flooring in the elevator lobby and a new north entrance door. The air conditioning unit serving the west side of the first floor was replaced.

Several window screens on the third floor were replaced due to wind and hail damage that occurred the previous summer.

Personnel Notes

The Brown County Commission honored Dick Schooley and Sherri Rawstern for their 26 years of employment at DPM.

Lora Schaunaman is a board member for the Association of South Dakota Museums.

Museum board members David Didreckson and Melissa Erlenbusch completed their terms. Gayle Bortnem and Laura Kramp were appointed to begin three year terms in 2016.

DPM's dedicated corps of student and adult volunteers spent 2,460 hours working in all areas of the museum. Their efforts were recognized during an end of school party and a luncheon held in their honor.

Granary Activities

The Granary Rural Cultural Center was the site of numerous activities during its six month season. The 22nd annual All Dakota High School Art Event attracted 128 students from North and South Dakota schools who spent a day working with the following professional artists: Jay Hopkins and Joy McCall who judged the art entries; keynote speaker, Troy McQuillen, and artistic workshop leaders Ross Hettinger, Sherri Treeby, Hannah Nehlich, and Nick and Nicole Fischer.

Summer art shows featured Ashley Farrand and John Eichinger. "Booming Brown County Towns", located in Putney Hall, highlighted early activities of area towns.

Lora Schaunaman led three sections of art camp that were each four days long. New this year was the Art Camp tee shirt that students could purchase. She also hosted a canvas painting event for novice artists.

Phil Baker visited for a second year to provide a fun filled afternoon of music and dance to youngsters. The Old Fashioned Ice Cream Social and Fall Living History Festival were held using the same format as previous years.

A mural created by Nick and Nicole Fischer and students at the 2014 All Dakota High School Event was hung on the outside of the north doors of the Granary Gallery. It added a much needed touch of color to the building.

The HVAC condensing unit was repaired, and a new water meter installed that BDM Water can read from its office. No other maintenance was required this year.



Promotional Efforts

DPM utilized radio, television, print, and electronic media to communicate news to its audience. Rack cards replaced brochures for the Museum and the Granary. Facebook, Twitter, and YouTube were used to communicate news, upcoming events and trivia. Yelp, Trip Advisor, and Travel SD were also part of our electronic media toolbox. Funds to support these efforts are allocated to DPM by the city as part of the Promotion Fund created by the Tourism Tax.



Planning for the Future

Brad Ciavarella, an architect who has worked with the DPM on past renovation projects, was hired to review his previous plans for a much needed addition to the museum building. The 2008 plans proved to be unsuitable for the current needs of the museum; the most notable being of gallery space suitable to host the large scale exhibits for children. Ciavarella redrew the plans accordingly and is currently working on materials, costs, and estimated timeline for such a project.

The DPM Foundation funded this work. It also used funds received as memorials to Granary founder, John Sieh, to secure the services of Ciavarella to develop a campus improvement plan for the Granary to address parking, way finding, and venue improvements to be implemented over a period up to ten years. Three plans were drawn and presented to staff and board who are currently in the review process.

Education Department

DPM uses exhibits and programs to tell the stories of Brown County history. Each have equal value, yet each reaches different audiences. DPM's educators serve as ambassadors and deliver the message to the audience by visiting classrooms, leading camps and museum tours and presenting programs to adult groups throughout the county.

During the 2016 calendar year, a record 333 classrooms received a visit from DPM staff. Obviously that means one classroom received multiple visits throughout the year, which is part of the overall objective of the department. Curriculum has been developed for monthly visits with each visit touching on a new historical theme related to the development of Aberdeen and Brown County. Several new classroom were added during the year including those at Mike Miller Elementary, which opened for the first time in the fall of 2016. Aberdeen's homeschool group began coming to the museum for monthly programs, which was an increase over their once a year visit of the past.

New programs incorporated Arikara artifacts, animal pelts, and toys, which were popular with all ages. Additional volunteers joined the education department to help fulfill this increased demand.

The time honored Afternoon Into the Past and History Camp programs are still among the most popular offerings in the department.

The partnership with Roncalli sixth grade class marked its 23rd year. The students shared over 140 hours of volunteer service to assist with educational programs both at the museum and in area classrooms.

The educational role of museums continues to be vital to all children, especially its youngest. A recent (2014) study reports that

"Children who visited a museum during kindergarten had higher achievement scores in reading, math, and science in third grade than children who did not."

DPM has built strong relationships with area children through its efforts to interact with them both in the classroom and at the museum. This ultimately helps us nurture a new generation to use and appreciate museums of all types.



Students making butter during a recent visit by DPM staff to their classroom.

Discovering 3-D is nothing new! Using an 1800s stereoscope or 3-D viewer is part of the Afternoon Into the Past experience.



Mary Baird demonstrating pioneer toys during a visit to a classroom



Popping corn the old fashioned way,—over an open fire — at History Camp.



Homeschool students enjoying an activity at DPM.

DPM Volunteers

Marty Axlund
 Garrid Baldwin
 Donna Bertsch-Bratland
 Betty Beyer
 Dyane Bjordal
 Evelyn Blum
 Gayle Bortnem
 Boy Scouts
 Nancy Clark-North
 Kathleen Daly
 Kaye DeYoung
 David Didreckson
 Phyllis Donat
 Carolyn Eaton
 Wes Elliott
 Jan Erickson
 Melissa Erlenbusch
 Theresa Fjeldheim
 Allen Gates
 Susan Gerlach
 Barb Gehrts
 Carmel Heyd
 Bill & Mary Jo Hild
 Kendall Family
 Levi Kessler

2016 Volunteer Hours

Reception	1,414.25
Museum Events	32
Board Members	110
Docent/Exhibit Hosts	21
Junior Docents	145.5
Education Dept.	30
Collection Dept.	306.75
Granary	152
Exhibit Dept.	216.25
Gift Shop Assistance	32.25
Total	2,460

At current minimum wage of \$8.55 per hour, hours worked by volunteers are valued at \$21,033.00

Klipfel Family
 Christine Kiesz
 Laura Kramp
 Carol Kringstad
 Marilyn Lahr
 Dana Locken
 Heidi Losure
 Mike McCafferty
 Janice Mohr
 Evelyn Nikolas
 Shirley Pelkofer
 Jason Pettigrew
 Annisa Poor
 Jean Rahja
 Chris Rawstern
 Caroline Sahli
 Schaunaman Family
 Cindy Schick
 Jacie Schley
 Mark Simon
 Pat Waltman
 Kim Weaver
 Kathy Webb
 Casey Weismantel

2016 -17 Junior Docents

6TH Grade GOLD Class

Josh Adolfsen
 Maria Barnett
 Jacob Bellefeuille
 Hunter Binder
 Thomas Bronikowski
 Ella Budig
 Hannah Chamberlain
 Zach Daggett
 Zach Eschenbaum
 Rachel Fahrni
 Jazmine Hart-Crissman
 Alyx Hoffman
 Kaleb Hoover
 Jadon Jorgenson
 Brendan Livermont
 Michael Luu
 Valerie Maina
 Sadie Raap
 Rachael Swisher
 Phillip Zens

Mr. Mark Stone & Ms. Jennifer Goscicki, Teachers

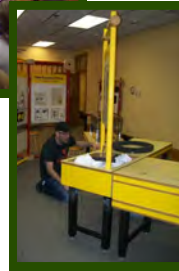
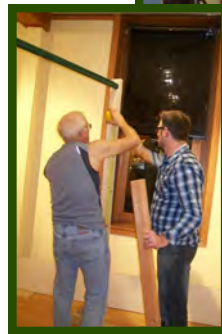
**Celebrating
 23 years of service
 by our sixth
 graders from
 Roncalli.**

Junior Docents Have Shared
 15,580 Hours of
 Service with the DPM
 Since the Program Began.

6TH Grade GREEN Class

Nic Adolfsen
 Blake Arnesen
 Tyler Berndt
 Hope Chamberlain
 Lauren Dosch
 Peter Duenwald
 Constantine Feickert
 Ella Hanson
 Nathan Harr
 Sawyer Henrich
 Lillian Jensen
 Makayla Kobos
 Sam Koch
 Andrew Lewno
 Abby Lohman
 Maddox May
 Austin Meyers
 Kelby Opland
 Elly Scott
 Gracie Traphagen
 Ksenia Unser

DPM Volunteers in Action



The 30 Countries & 5 Canadian Provinces Represented by Visitors During 2016

Australia
Barbados
China
Costa Rica
Croatia
Czech Republic
Dominican Republic
Finland
France
Germany
India
Israel
Jamaica
Japan
Kenya
Luxembourg
Mexico
Moldova
Netherlands
New Zealand

Nigeria
Pakistan
Palau
Puerto Rico
South Africa
Spain
Thailand
Trinidad
Ukraine
Virgin Islands

Canadian Provinces:

Alberta
British Columbia
Ontario
Quebec
Northwest Territory

Visitors Represented 48 States and The District of Columbia in 2016

Alabama
Alaska
Arizona
Arkansas
California
Colorado
Connecticut
Florida
Georgia
Hawaii
Idaho
Illinois
Indiana
Iowa
Kansas
Kentucky
Maine
Maryland
Massachusetts
Michigan

Minnesota
Mississippi
Missouri
Montana
Nebraska
Nevada
New Hampshire
New Jersey
New Mexico
New York
North Carolina
North Dakota
Ohio
Oklahoma
Oregon
Pennsylvania
Rhode Island
South Carolina
South Dakota
Tennessee

Texas
Utah
Virginia
Vermont
Washington
West Virginia
Wisconsin
Wyoming

Washington DC



2015 vs 2016 DPM & Granary Attendance

	2015		2016	
In-House Programs	Events	Participants	Events	Participants
Tours				
Local Schools	32	620	17	290
Out of Town Schools	8	433	24	523
Adult Groups	7	54	8	147
Children's Museum/ Toys	40	675	62	901
Children Preschool	0	0	7	107
Other Youth Tours	22	449	4	52
Misc. Tours	16	372	20	413
Afternoon Into The Past				
Local Schools	19	460	20	447
Out of Town Schools	7	160	9	162
Programs/Events				
Youth In House Programs (not APAST)	34	664	24	573
Adult In House Programs	4	39	2	55
Receptions	4	192	9	364
Meetings/Parties/ Conference Room Use	43	445	69	765
Training	17	119	6	48
Downtown Events	2	493	0	0
Volunteer Appreciation	1	24	1	24
Children's Open House	0	0	1	131
Holiday Open House	1	504	1	600
Other	0	0	2	157
In-House Events & Programs Totals	257	5703	286	5,759
DPM Walk-Ins	15,479		17,978	
Adjusted Walk-Ins	10,321		12,219	

	2015		2016	
	Events	Participants	Events	Participants
DPM Outreach				
School Visitations	272	5,951	333	7,795
Youth Programs	2	502	3	261
Adult Programs	23	462	12	305
Exhibits	21	9,061	16	1,728
Kits/Check out Materials	1	30	1	30
History Camp	7	161	6	106
Brown County Fair	7	26,250	6	27,000
Other Outreach	0	0	1	100
Totals DPM Outreach	333	42,417	378	37,325
Granary Outreach				
Granary Walk-Ins	X	245	X	157
Granary Events/ Tours	8	296	5	238
Granary Art HS Show	10	119	12	116
Granary Art HS Show Exhibit/ Reception	2	57	1	21
Granary Art Camp	13	162	13	148
Granary Rental Event	1	50	0	0
Granary Fall Festival	1	260	1	176
Totals Granary Outreach	35	1,189	32	856
Outreach Events & Programs Totals	368	43,606	410	38,181
TOTAL EVENTS & PROGRAMS ATTENDANCE	625	59,085	696	43,940

ATTENDANCE TOTALS 2002—2016

	2002	2003	2004	2005	2006	2007	2008	2009	2010	2011	2012	2013	2014	2015	2016
DPM IN HOUSE															
WALK-INS	9,193	7,475	8,764	9,770	10,030	10,324	9,008	9,660	9,366	11,054	11,106	10,503	12,143	10,048	12,219
EVENTS	288	202	252	250	306	271	296	240	273	274	253	249	241	257	286
PARTICIPANTS	6,117	4,664	5,074	5,341	5,460	4,712	6,234	4,489	5,686	4,962	4,592	4,305	4,744	5,703	5,759
DPM OFF-SITE															
EVENTS/ EXHIBITS	311	324	289	269	239	246	193	266	257	315	334	353	331	368	410
PARTICIPANTS	66,351	69,706	56,018	54,018	60,534	59,356	50,903	45,128	57,730	55,633	62,572	61,668	54,467	43,628	38,181
GRANARY**															
WALK-INS												482	226	245	157
EVENTS												42	25	35	32
PARTICIPANTS												642	939	944	699
GRAND TOTALS															
EVENTS	599	526	541	519	545	517	489	506	530	589	587	644	597	625	696
PARTICIPANTS	81,661	81,845	69,856	69,129	76,024	74,392	57,173	59,277	72,782	71,649	78,270	77,600	72,519	59,379	43,940

** GRANARY TOTALS ARE REFLECTED IN OVERALL OFF-SITE TOTALS, LISTED FOR REFERENCE ONLY

Exhibit Department

The Lamont Gallery

SD Governor's Biennial

Art Exhibit

(December 10—January 17)



DPM was one of five sites in the state to host this exhibit featuring art by 48 SD artists who were selected from a pool of 156 applicants.

The artists used a variety of styles and media such as cast iron, bronze, fiber, clay and the more traditional oil and water-color paints to create pieces that focused on contemporary issues and cultures.



"Toys the Inside Story"

(February 9—April 30)

This traveling exhibit from the New York Science Center was selected for the 2016 Children's Exhibit. It focused on the mechanics behind the way toys move, make sounds, and light up using gears, cams, pulleys, linkages and circuits.



"When Work is Play"

Exo-Syndicate

(June 1—August 16)

The Exo-Syndicate featured four local sculptors, Eleni Aman, Crystal Harper, Hannah Nehlich, and Greg Blair. Their sculptures were designed to be interactive, so the audience was encouraged to use toys, Legos, and crayons to add to the artwork.

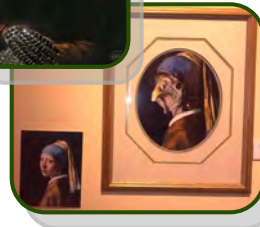
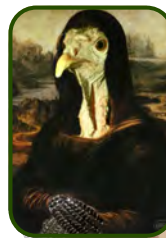


"Flock of Fabulous"

Bobbi Piasecki

(September 10—November 10)

This exhibit took a fanciful look at iconic artworks such as the Mona Lisa, The Birth of Venus, and The Girl With the Pearl Earring by pairing photographs of the artist's pet turkey, Gobbles, in costumes similar to those worn by the subjects in the original paintings. The result was a humorous look at some of our favorite pieces interpreted in a very new and unusual way.

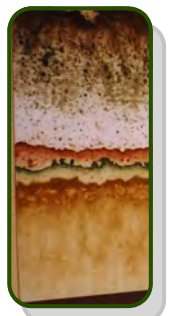


"Musings & Outlooks: Landscapes of Their Own"

Laura Jewell

(November 22—January 8)

Laura Jewell, a Sioux Falls artist, shared several of her recent abstract oil paintings for this show. The prairie landscape provided her inspiration for these pieces that feature the subtle color and texture changes one finds in nature.



The Dacotah Gallery

“This is What Dreams are Made Of”

South Dakota Snow Queen Festival (January 8—January 29)

This gallery featured numerous official Snow Queen portraits that were part of the larger exhibit that celebrated the Snow Queen Festival that also filled both the Helen Bergh Room and Prairie Landing Gallery.



“A Seasonal Journey Through the Colors”

Linda Roesch

(February 19—March 27)

South Dakota artist, Linda Roesch, used bright color palettes and fanciful subjects such as farm animals and country landscapes for the acrylic paintings that comprised this exhibit. It was the perfect companion show for the nearby Children’s Exhibits.



“The Eye of the Beholder”

Marcy Urban

(April 1—May 29)



Marcy Urban, a Belle Fourche, SD artist, used loose brush strokes and natural, muted colors to paint landscapes and nature scenes. She also incorporated abstract elements in her sky-scapes for interesting effects.

“An Eagle Flies”

Christine Rawstern

(May 31—October 20)

Christine Rawstern’s style is highly detailed and realistic, despite her relatively short artistic career—just two years. Her subject matter includes landscapes, elegant still life, as well as dramatic florals.



“Christmas Tree Lane”

(November 19—December 23)



This classic holiday exhibit allows the public to be involved by providing decorated trees and wreaths. This year 26 trees and 9 wreaths filled the Dacotah Gallery, Helen Bergh Room, and the Conference Room with holiday spirit.

Prairie Landing Gallery

(also known as the 2nd floor landing)

"This is What Dreams are Made Of" South Dakota Snow Queen

(January 8—January 29)

Dresses, crowns, programs and memorabilia from the first 70 years of the South Dakota Snow Queen festival filled this area to compliment the exhibit pieces in the Dacotah Gallery and Bergh Room.



"Toys the Inside Story"

(February 9—April 30)



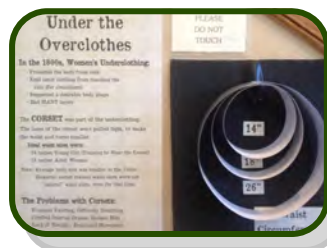
Many toys from the DPM collection were part of a small display created in conjunction with the larger Toys exhibit. A commercial video about the release of a

1960s robot toy included in the Toys traveling exhibit was also located in this gallery.

"Things That Makes You Go Hmmm..."

(June 10—September 25)

Many unique and unusual artifacts from DPM's collection were included in this exhibit to challenge visitors to identify and explain their usage. One feature that captured visitor's interest showed the size of a woman's waist when a corset was worn.



"Playing with Needles and Stitches"

(October 6—November 20)

As part of the holiday tradition, many pieces from the National Needlework Guild of SD were included in this display. During the run of the exhibit, members of the group offered stitching classes at DPM.



"Best Wishes: Vintage Christmas Cards"

(November 18—December 30)

The final display in this gallery showcased many of the exquisite Christmas cards that are part of the museum's collection. These greetings were popular prior to sharing thoughts through e-mail, texts and tweets.



Conference Room

"Belle Painting of Ancient China"

Qin Bailan

(February 9—12)

DPM was the site of a brief exhibit of Chinese paintings created on silk by artist Qin Bailan. She shared her techniques in an evening reception.



Outreach Exhibits

Not all exhibits are created for use at the museum. Here are a few examples of small displays created for events throughout the community during 2016.

*70th Anniversary of the SD Snow
Queen Festival
Aberdeen Civic Arena
January 16, 2016*



*Downton Abbey Tea
ARCC Art Gallery
March 5, 2016*



*Nurse's Day - Dakota Event Center
May 5, 2016*

*Constitution Day "Let Women Vote"
NSU
September
16, 2016*



*Aberdeen Central High School
50th Class Reunion Class of 1956
Ramkota
June 10—12, 2016*



*Chamber Ag Banquet
"Tribute to Veterans"
Dakota Event Center
November 11, 2016*

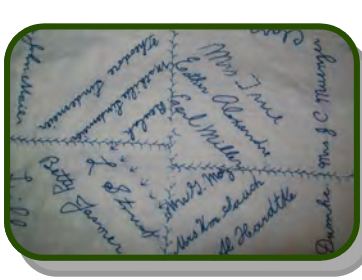


Collection Department

New Collection Pieces

DPM's collection continues to grow as artifacts are added to augment existing sub-collections, such as the Aberdeen Pheasant Baseball material, or to begin new ones such as the development of Aberdeen's Super 8 Motel business. Pieces are no longer taken simply because they are old; they must help us articulate stories about Aberdeen/Brown County events, places, and people. Pictured below are a freshman beanie from Northern, an Aberdeen Pheasants warmup jacket, a signature quilt made in 1922 by the ladies of Zion Lutheran Church, a pair of 1970s Earth Shoes, and a "Listen Ladies" cookbook from the 1950s.

During the year, 50 donors contributed 599 pieces to the collection.



Good collection management requires items be removed from the collection occasionally due to condition, relevance, or over representation (too many of the same item.) This year 160 pieces were removed and either reclassified for use as exhibit props or research or offered to other institutions.

The artifact inventory is ongoing with information on nearly 32,000 pieces completed and noted in the Past Perfect digital system. Nearly 1,200 new entries were added during 2016 and thousands of image photos added to individual collection records already in the system.

Pieces Added to the Art Collection

DPM selects pieces from featured art exhibits to add to its collection each year.



"Pacific Paradise"
Photograph
John Eichinger



"Winterfest"
Acrylic
Christine Rawstern



"Soul Secrets"
Pastel
Autumn Schlomer
Best in Show
High School Art
Show

"Frozen Horizons"
Oil
Laura Jewell



Miscellaneous Accomplishments

Staff and volunteers captured digital images of collection pieces, began to inventory the archival collection, accessioned the vast collection of Snow Queen materials, and transcribed oral history tapes.

What Happened at the Granary?

A variety of activities took place at the Granary this year. The 22nd annual All Dakota High School Art Exhibition, art classes and camps, an ice cream social, a children's concert, and a living history were all part of the schedule during 2016.

Ashley Farrand, an Aberdeen student pursuing an art degree from SDSU, was featured during the first half of the season in Granary Gallery. Her show featured many of her drawings using either pastel or charcoal. John Eichinger, a local amateur photographer, finished the season with a show of his surf and sand shots taken in California and Hawaii. Putney Hall was the site of "Booming Brown County Towns", an exhibit built from artifacts and photos in the DPM collection from the towns within the county.

Phil Baker provided a lively afternoon of fun for area kids who enjoyed participating in his song and dance fest. Audiences of all ages enjoyed the annual Ice Cream Social and Fall Festival, opportunities to meet friends for a leisurely afternoon of food and fun.

The DPM Foundation Board used memorials it received following the death of Granary founder, John Sieh, to contract with architect Brad Ciavarella to develop plans for improvements in existing grounds and landscapes in order to provide better services to the visiting public. Some concerns addressed were the need for handicapped parking areas, a small kitchen, better way finding and signage at the site, and appropriate landscape features. Once a plan is finalized, it will provide a long range guide to gradual improvements.

Over 850 people visited or participated in programs at the Granary during the season.



Drawing in Ashley Farrand's show

Fun at the Great Art Escape



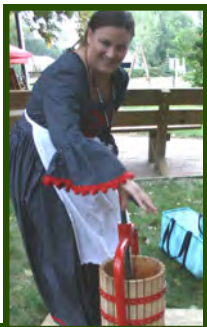
Lunch bag art created for the High School Art



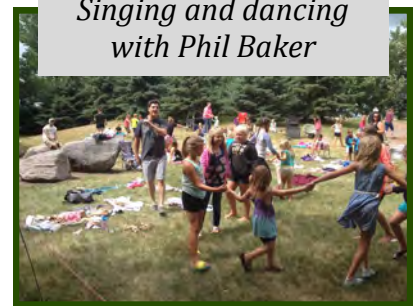
participants by the young artists at Noah's Park Preschool.



Photo from John Eichinger's show

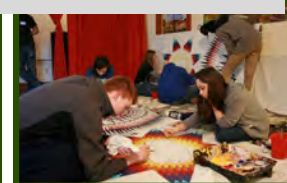
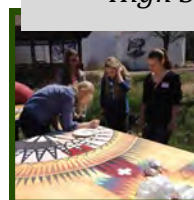


Singing and dancing with Phil Baker



Living History Fall Festival

Learning new techniques at the High School Art Event



THIS AND THAT

Dick Schooley Celebrates 89 Years

Dick Schooley began working at DPM in the fall of 1990 after he retired from a career with the federal government. Ever since that time he has been keeping the museum clean, providing freshly popped corn for staff and volunteers each day, and whistling his way through his tasks. In March of 2016, he celebrated his 89th birthday, and staff shared a special cheesecake with him. The *American News* did a feature article on him. The photo on the right was part of that piece. Thank you, Dick, for all you do for us.



2016 Best of Show Winner at Granary

Each year judges reviewing the artwork created by area high school students for the All Dakota High School Art Exhibition choose one piece to be honored as "Best in Show." A \$500 cash prize is awarded to the creator of this piece. Autumn Schlomer, representing Mobridge-Pollock High School, used pastels to create the winning piece entitled "Soul Secrets." Autumn graciously sold the piece to DPM for its permanent art collection.



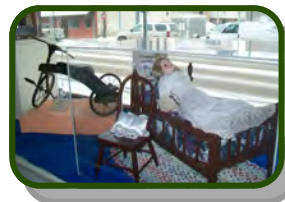
New Look for DPM Van

DPM's 2007 Chevrolet Uplander van was transformed into a moving advertisement for the museum and the Granary Rural Cultural Center thanks to a van wrap. The design includes images found at both facilities as well as contact information for both. You won't miss us as we travel throughout the county.



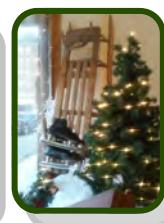
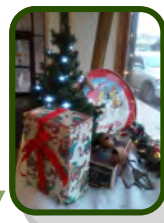
First Avenue Window

The platform below the large window facing First Avenue works nicely for small displays to greet visitors as they enter the museum. Here are some of this year's featured exhibits.



*Toys the Inside Story
Toys from the DPM Collection
Feb. 10 - Aug. 8*

*School Days:
CHS 50th Reunion
Aug. 16- Nov. 19*



*Holiday Memories
of Winter Sports
Nov. 19 - end of year*

2016 Financial Summary

Brown County Funds		\$363,509.12
Aberdeen City Funds		<u>\$12,000.00</u>
TOTAL FUNDS AVAILABLE		\$375,695.12
Salaries and Benefits		
Salaries	\$205,310.74	
Benefits	\$68,205.36	
Total Salaries and Benefits	\$273,516.10	\$273,516.10
Operations		
Insurance	\$2,506.58	
Professional Fees	\$520.44	
Cafeteria Flex Plan	\$112.50	
Publishing	\$18,915.00	
Rentals	\$4,247.00	
Repairs and Maintenance	\$22,024.98	
Vehicle Maintenance	\$4,289.86	**
Supplies & Materials	\$32,712.77	
Postage	\$923.93	
Copier	\$297.35	
Travel & Conference	\$1,590.08	
Utilities	\$4,410.40	
Total Operations	<u>\$92,550.89</u>	<u>\$92,550.89</u>
Capital Assets –Machinery & Equipment	\$.00	\$.00
Total Spent	\$366,066.89	\$366,066.89
Total Remaining end of year		\$9,628.13

** This amount includes \$3,710.00 for a van wrap