

# DACOTAH PRAIRIE MUSEUM

## 2012 ANNUAL REPORT





## Our Mission

Preserving and sharing the stories of the Dakota Prairie and its inhabitants

## Our Vision

The Dacotah Prairie Museum, a non-profit, permanent learning center in service to all people, is committed to the continued growth of its collection of material evidence representing the ongoing history of its region. This collection will be used by present and future generations to study and interpret the lives and accomplishments of previous generations inhabiting the Dakota Prairie. Through these endeavors the Museum will continue to advance itself as a cultural, educational and economic asset to South Dakota.

## Our Values

**Respect:** For people, their stories, their artifacts


**Excellence:** In personal and institutional performance

**Achievement:** Through timely accomplishment of stated goals

**Responsibility:** To ourselves, to each other, to the institution and to the public

**Fairness:** In judgment and decision making

**Integrity:** In preservation and presentation



**2012 Board of Trustees**

Jacie Schley, President  
Eric Vetter, Vice-President  
Kathy Sperry, Secretary  
Ed Bohlander  
Alan Hawkinson  
Heath Johnson  
Brian Kellar

Duane Sutton (County Commissioner)

**2012 DPM Foundation**

Dean Webb, President  
Stacy Levsen, Vice-President  
Dorothy O'Keefe, Treasurer  
Allen Gates  
Randy Grismer  
Carmel Heyd  
Nancy Clark-North  
Jason Pettigrew  
Cindy Schick

---

**Museum Staff**

Sue Gates, Director  
Sherri Rawstern, Curator of Education  
Lora Schaunaman, Curator of Exhibits  
Jackie Ormand, Collection Manager  
Carol White, Office/Gift Shop Manager  
Marianne Marttila-Klipfel, Curatorial Assistant  
Dick Schooley, Custodian





**Brown County Historical Society  
Annual Meeting**

**Highlights from 2012**



**History Camp**



**Christmas Tree Lane**



**Fall Festival**



**Boys & Toys event**



**Pampered on  
the Prairie**



**Volunteer Luncheon**



**Cooking  
Series**



**Granary High School  
Art Exhibition**



**Children's Exhibits**



# History of the Dacotah Prairie Museum

The idea for a museum in Aberdeen originated in 1938 when John Murphy, a Northern State College professor, and Marc Cleworth, a salesman, created the Northern South Dakota History Museum, which was housed in the Central building on Northern's campus.

This museum closed in 1941 when space was needed on campus to train WWII glider pilots. The nearly 500 artifacts collected were either returned to donors or placed in storage where they remained until 1970 when they were added to the collection of the new Dacotah Prairie Museum.

## A New Museum is Born

The idea of a museum resurfaced in 1963 when a group of past presidents of the American Association of University Women (AAUW) met to consider possible community projects for the group. By 1964 the AAUW committee, along with representatives of other community groups, had chosen a museum as their project and had begun looking for possible sites.

In April 1968, the Aberdeen Parks and Recreation Department offered the Anderson Recreation Center (now Senior Center) as a temporary home for a museum. The Museum's board of directors accepted the offer and, in 1969 opened the Dacotah Prairie Museum, but the search for a permanent site continued.

## The Museum Finds a Home

On March 11, 1970, Fred Hatterscheidt, a local businessman, offered the building at 21 South Main to the County for use as a museum. The County Commissioners accepted the offer and by mid-summer



renovations to the building began.

On October 25, 1970, the Dacotah Prairie Museum opened the doors of its new home to the public. Governor

Frank Farrar spoke at the opening ceremony.

In 1970 the Museum's exhibit area included only portions of the first floor, as it shared the building with

several other tenants. As the decade progressed, the Museum expanded its exhibit space to the entire first floor and half of the second. By 1980 the Dacotah Prairie Museum occupied the entire building. Staff and volunteers worked to ready new found spaces to accommodate staff, exhibits and collection storage.

## The 1980s and 1990s

During the 1980s and 1990s the Museum continued to define itself. A mission statement was adopted, and policies of operation were put into place. Staff numbers increased, as did the Museum's tax-supported budget. The Dacotah Prairie Museum Foundation was incorporated in 1985 to assist the Museum in raising outside funds to supplement the annual budget.

During these two decades, several professional assessments were conducted to help the Museum improve its collection management methods, maintain the integrity of its historic building, and strengthen its overall operations.

## 2000 and Beyond

Renovations to the building's exterior and its major first floor gallery spaces were the focus of work during the early years of this period. The feasibility of an expansion project to double DPM's size was explored in 2007—2008. Despite a positive response from the community, a down-turned economy postponed action on the project. To compensate, upgrades to existing spaces were made to maximize their effectiveness.



## Unexpected New Space

In 2012 John Sieh, founder of the Granary Rural Cultural Center, donated the Granary to DPM/Brown County. DPM plans to utilize the 2.3 acre rural facility from April—October for a variety of art and heritage related activities for audiences of all ages and interests.

## Director's Report

### ***“Growth demands a temporary surrender of security” ~ Gail Sheehy***

The Dacotah Prairie Museum experienced growth and change in all aspects of its operations during 2012, which is on one hand exciting while on the other a bit unnerving. Staff was enthusiastic about new opportunities that presented themselves during the year, but approached them cautiously, wondering what challenges each would bring to the already tight schedules and budgets. The question on everyone's mind was “Will we be up to the challenge this new opportunity brings us?” As we reflect on 2012, we all can say “we successfully met and overcame each of these challenges.”

I will provide an overview of the work of each department, including their unique challenges. Staff has provided detailed work reports that can be found on subsequent pages. This overview briefly shows our efforts to temporarily surrender our sense of security so we could ultimately grow and flourish.

### **Exhibits Open, Close and Move**

We ushered in 2012 by opening the “Exploring Brown County's Pre-Historic Past” exhibit, which adjoins the Prairie Diorama. Work on this display was extensive and took nearly eighteen months to complete. This was the final step in a five year work plan to create all new exhibits to compliment the Prairie Diorama on the east end of first floor.

Exhibit work then moved to the west side of the first floor where displays in the four period rooms were dismantled in preparation for transforming the small rooms into one large exhibit space. Closing popular exhibits is always stressful; these had been visitor favorites for many years, but the space was simply too confining for comfortable viewing. Walls came down in October; and new construction began soon thereafter. The new gallery and its “Frontier Life” exhibit will open in the fall of 2013.

The Pheasant Canteen exhibit (one of the four mini-exhibits) was moved to the second floor maze area to tie in with the 40's exhibit.

Children filled the museum in February and March to enjoy the three Children's Exhibits—An Enchanted Forest; A Pioneer Town; and A Native American Encampment.

Seventeen temporary shows were created for the Lamont, Dacotah, and Landing galleries highlighting art of all types.

In addition, exhibit staff provided displays for events and developed summer programming for the Granary. See specifics later in this report.

### **Same Material; Different Delivery**

Museum educators nationwide mirror classroom teachers who have incorporated technology into their teaching techniques. During 2012, DPM began the process of creating digital versions of its slide show programs. To date, two programs are available in PowerPoint format. Work will continue on this effort until the entire library has been updated.

Staff developed a new series of six PowerPoint programs specifically for use in fourth grade as part of the South Dakota history curriculum. These were introduced into two Aberdeen grade schools during the 2011-2012 school year. Additional schools will be added to the schedule for 2012-2013.

Existing programs for third grade were used by every Aberdeen public school as well as Roncalli. These units focus on early Aberdeen history; each fall, students take walking tours of downtown to view historic architecture as part of these lessons.

Second grade classes at Lincoln, Simmons, and Roncalli used one program about Native Americans and another about art found in history.

The Education Catalog was digitized and placed on DPM's website for easy access. Completing this task fulfilled an ed department goal and helped DPM move toward its goal of becoming a “greener” facility overall.

Other activities in this department included the training of Junior Docents, organizing and running History Camp, and working with the exhibit staff to incorporate information about new exhibits into the volunteer training material, general tour scripts, and the education catalog.

## Showing and Storing the Artifacts

With the collection inventory nearly complete, work in the Collection Department will now focus on extending the life of the artifacts, whether in storage or on exhibit.

Muslin dust coverings are being made for each piece in the permanent art collection. ID tags bearing a photo of the covered piece as well as its catalog number are attached to the coverings so staff can easily locate any desired piece.

A large format scanner was purchased so the newspaper archive can be saved digitally, which will improve access, allow for off-site storage of the papers, and open space in the on site storage areas for new artifacts .

Collection records are vital to any museum, and after fifteen years of work DPM's records are in good shape, and staff can easily locate nearly every collection piece. With that completed, work can begin on the problem items-those with no numbers, wrong numbers etc.

## Granary Offers New Space

The Granary Rural Cultural Center near Groton became the property of Brown County with all legal work for property transfer completed in May 2012.

Acquiring this site will allow DPM to expand its program offerings during the summer months to include events at the Granary.

Improvements to the grounds are necessary and will be worked at gradually. Exterior painting and electrical improvements including installation of baseboard heat in the Granary gallery were done in 2012 with 2013 work to include roof repairs.

Information about the Granary and its events was posted at [www.granaryfinearts.org](http://www.granaryfinearts.org), which is a secondary page of DPM's website.

Fully incorporating the Granary into museum programs will be a slow, steady process. Again, we surrendered the security of the status quo to accept the challenge of this new space, which will allow DPM to grow in a new and unexpected direction.

## Facility Updates

Several facility updates were made throughout the year. Media equipment was installed in the second floor conference room, so DPM staff or other groups can view DVD's or PowerPoint presentations or even attend Webinars using the computer equipment and 60" flat screen TV. The southern most awning on the Main Street façade was damaged in a wind storm, so a new one was built and installed; the small door to access rooms in the maze was replaced with a 36" door; and the gift shop was updated with new track lighting and paint.

## Personnel News

In 2012 Brian Kellar and Alan Hawkinson were appointed to their first terms on the DPM board, and Ed Bohlander completed his second three-year term. Dean Webb retired from the Foundation board after sixteen years of uninterrupted service to DPM, either as a Museum or Foundation board member.

Christine Rawstern received the Peg Lamont Volunteer Service Award at the Volunteer Luncheon in April. Christine has shared her computer graphic talents with DPM for many years creating posters, invitations, and brochures. She also has led several segments of the annual cooking series.

Staff member Sherri Rawstern served as vice president of the Association of SD Museums; Sue Gates served as a regional chairman for the American Association of State and Local History; and Carol White presented a workshop on museum gift shops at the annual meeting of the SD Museum Association held in Redfield.

## Grants Received Help DPM Grow

The Hatterscheidt Foundation awarded a \$5000 grant to DPM for work specific to the Hatterscheidt firearm collection, which will be highlighted in the new Frontier Life Exhibit.

The SD Questers provided \$3000 for restoration of a small Ashford painting.

## Education Department

During 2012 the Education Department met three of the goals set forth as part of DPM's long range plans developed in 2011, the first being to have Marianne Klipfel, part time curatorial assistant, spend more of her time helping with programs—both presenting and developing them.

Marianne spent much of her time overhauling the existing education catalog by updating its contents and making it suitable for placement on DPM's web page, for easier access to the public. The new catalog was posted prior to the beginning of the 2012-2013 school year—a second goal met.

Developing new programming for area fourth grade students was the final goal met during the year. Marianne worked closely with DPM's educator, Sherri Rawstern, to create lessons relevant to the SD history curriculum used in the fourth grade. The pair developed "Our History—The Story of a People, the Story of Our Land," which is detailed at right. These delightful PowerPoint programs are interesting, entertaining, yet accomplish the learning goals of each of the lessons

Staff gave numerous tours and programs during the year; details can be found on page 9 of this report. Noteworthy are the 35 tours (461 participants) through the Children's Exhibits. The ever-popular third grade Afternoon Into the Past program attracted 22 classes (519 students) up slightly from 2011 when 19 classes (498 students) enjoyed the lively hands-on program.

History Camp marked its 16th year, and fifty day campers attended the 2012 sessions. Since 1996 when the program started, 961 students have attended the camp, which is held at Centennial Village.

DPM staff took pioneer activities to Finn Fest in Frederick and 125 children enjoyed them.

Education funding has impacted teachers and their ability to take students out of school for field trips. DPM has worked hard to compensate so students can still enjoy the historic activities. Thus more and more of the educational programming is conducted off site at the various schools throughout the county. The numbers on page 9 show this shift from in-house to off site usage, which is expected to continue as time goes on and funds become tighter for schools.

### Introducing Susan the Sleuth



This is Susan the Sleuth, main character in a new series of PowerPoint programs developed for use in fourth grade classes entitled "Our History—The Story of a People, The Story of Our Land." To date Susan takes students through six topics relevant to SD history: The Buffalo, Homesteading, Lewis and Clark, The Railroads, Statehood, and Wars. More programs will be added in 2013.

This new approach to school visits has proven to be popular both with teachers and students. DPM staff arrives in the classroom with the PowerPoint lesson for the day pre-loaded on a USB flash drive, which is easily plugged into the classroom smart boards for use. During the 2011-2012 school year, Roncalli and Lincoln used these programs.

#### 2012 Roncalli Middle School

Nic Allen	Spencer Kokales
Josh Barnett	Ben LaPointe
Olivia Barreth	Alex Lindner
Jaren Bohling	Erin McNulty
Tommy Chandler	Erica Mitzel
Audrey Cihak	Brady Morgan
Allison Dix	Samantha Olson
Jared Everson	Sydney Raap
Jami Ewart	Maxwel Reede
Matthew Fahrni	Jackson Rohlf
Lexy Forred	Lucas Schaeffbauer
Jianna Gellhaus	Austin Schlosser
Joseph Goetz	Kennedy Schumacher
Mary Gutenkauf	Macy Schumacher
Connor Hansen	Payton Shafer
Gavin Heier	Carson Simes
Jack Hengel	Megan Streier
Derek Johnson	Spencer Titus
Jaden Karst	Billy Torrence
Micayla Kellar	Isaac VanOrman
	Matthew Weber



### Foreign Countries and Canadian Provinces Represented by Visitors During 2012

China	Saudi Arabia
Cuba	Scotland
Finland	South Korea
France	Sweden
Georgia (USSR)	Tajakistan
Germany	Thailand
Japan	Venezuela
Kyrgyzstan	Virgin Islands
Philippines	
Puerto Rico	<b>Canadian Provinces:</b>
Mexico	British Columbia
Russia	Manitoba



### Visitors Represented all 50 States and The District of Columbia in 2012

Alabama	Montana
Alaska	Nebraska
Arizona	Nevada
Arkansas	New Hampshire
California	New Jersey
Colorado	New Mexico
Connecticut	New York
Delaware	North Carolina
District of Columbia	North Dakota
Florida	Ohio
Georgia	Oklahoma
Hawaii	Oregon
Idaho	Pennsylvania
Illinois	Rhode Island
Indiana	South Carolina
Iowa	South Dakota
Kansas	Tennessee
Kentucky	Texas
Louisiana	Utah
Maryland	Vermont
Massachusetts	Virginia
Michigan	Washington
Minnesota	West Virginia
Mississippi	Wisconsin
Missouri	Wyoming

### 2012 Attendance Summary

<b>Walk-in Visitation</b>	<b>11,106</b>		
<b>In-House Programs</b>	<b># Events</b>	<b># Participants</b>	
<b>Tours</b>			
Local Schools	39	658	
Out of Town Schools	32	676	
Adult Groups	15	413	
Scouts	2	21	
Children's Museum	35	461	
<b>Afternoon Into The Past</b>			
Local Schools	15	364	
Out of Town Schools	9	201	
In House Programs	10	204	
Receptions	6	219	
Ethnic Cooking Series	3	193	
Meetings	65	761	
Training	19	121	
Art Crawl	1	25	
Young Boys Event	1	240	
Misc. Activities	1	35	
<b>Total In-House</b>	<b>253</b>	<b>4,592</b>	<b>4,592</b>
<b>Outreach</b>			
School Visitations	200	4,668	
Speeches	9	186	
Exhibits	28	35,160	
History in a Trunk	40	834	
Education Kits	14	295	
<b>Special Events</b>			
Brown County Fair	2	20,500	
History Camp	5	50 + 20*	
Granary Art Exhibition	24	225	
Granary Fall Festival	1	300	
Granary Programs	10	184	
Christmas Celebration	1	150	
<b>Total Outreach</b>	<b>334</b>	<b>62,572</b>	<b>62,572</b>
<b>Total Programs</b>	<b>587</b>	<b>67,164</b>	
<b>Total Attendance</b>			<b>78,270</b>

\* 50 campers; 20 junior docent helpers

## 2012 Adult Volunteers

Evelyn Blum  
Ed Bohlander  
Edythe Clark  
Deb Cleveland  
Betty Dobberpuhl  
Jan Erickson  
Allen Gates  
Randy Grismer  
Mary Jane Hansen  
Alan Hawkinson  
Carmel Heyd  
Bill Hild  
Mary Jo Hild  
Carole Jansen  
Heath Johnson  
Brian Kellar  
Joyce Kimmel  
Doug Klipfel  
Marilyn Lahr  
Stacy Levsen  
David Losure  
Heidi Losure  
Annikki Marttila  
Rachel Margolies

2012 Volunteer Hours	
Reception	1,184
Board Members	462
Junior Docents	497
Education	55
Clerical	19
Collection	113
Maintenance	0
Exhibits	24
<b>Total</b>	<b>2,354</b>

*At current minimum wage of \$7.25  
hr., hours worked by volunteers  
are valued at \$17,066.50*

Evelyn Nikolas  
Nancy Clark-North  
Dorothy O'Keefe  
Jason Pettigrew  
Joyce Pfeiffer  
Gail Pickus  
Bea Premack  
Jean Rahja  
Chris Rawstern  
Terry Rawstern  
Caroline Sahli  
Luke Schaunaman  
Neil Schaunaman  
Lois Schleder  
Cindy Schick  
Jacie Schley  
Kathy Sperry  
Eric Vetter  
Joan Walter  
Pat Waltman  
Dean Webb  
Kathy Webb  
Betty Werth  
Constance Woods  
Ramona Woodman

# Thank You!

## Attendance Totals 1998–2012

	1998	1999	2000	2001	2002	2003	2004	2005	2006	2007	2008	2009	2010	2011	2012
<b>WALK-IN</b>															
<b>IN-HOUSE</b>															
<b>Events</b>	194	207	235	222	288	202	252	250	306	271	296	240	273	274	253
<b>Participants</b>	4,832	4,739	4,482	4,665	6,117	4,664	5,074	5,341	5,460	4,712	6,234	4,489	5,686	4,962	4,592
<b>OFF-SITE</b>															
<b>Events</b>	385	408	406	364	311	324	289	269	239	246	193	266	257	315	334
<b>Participants</b>	41,649	46,305	42,073	45,720	66,351	69,706	56,018	54,018	60,534	59,356	50,903	45,128	57,730	55,633	62,572
<b>TOTALS</b>															
<b>Events</b>	579	615	641	586	599	526	541	519	545	517	489	506	530	589	587
<b>Attendance</b>	54,644	59,265	54,720	59,517	81,661	81,845	69,856	69,129	76,024	74,392	57,173	59,277	72,782	71,649	78,270

# Exhibit Department

## The Lamont Gallery

### “Treasured Memories”

(December 31, 2011 — January 29, 2012)



The annual Snow Queen exhibit, “Treasured Friendships” featured gowns and furs, mugs and crystal, capes and crowns, skis and Frosty as well as the Snow Queen portrait gallery. Through this, visiting dignitaries and contestants were given the opportunity to learn about this unique winter festival.



### “Enchanted Forest—Children’s Exhibit”

(February 10 – April 10)

Unicorns, butterflies, castles and magical trees took over the gallery for two months. Children enjoyed a puppet theater, leaf rubbings, castle blocks and many other “enchanted” hands-on activities in this delightful room.



### “Walking with Fingers”

(April 17 – May 26)



Lu Xu’s “Walking with Fingers” featured innovative paper and wood sculptures with whimsical themes like floating mobiles and imaginary creatures. Photographs of her “art events” staged in her Chinese hometown were also featured. Xu was studying her craft at NSU prior to pursuing an advanced degree elsewhere.



### “Straight Up Color”

(June 1 – July 25)

Donald Montileaux shared some of his newest works (painted masks) along with his classic ledger art. Many of the pieces in this show were inspired by beadwork and cultural symbolism.



### “Day County”

(July 30 – September 30)

Jacob Bosmoe’s “Day County,” a show funded in part by a grant from the SD State Arts Council, focused on the landscapes of Day County through abstract acrylics and free-form sculptures using wood from his grandfather’s Day County barn.



### “What if We...SD Disabled Artists”

(October 9 – November 30)

“What if We...” was the question asked by the forty talented artists in this show, all of whom experience visual, physical, or cognitive challenges. The show’s cooperative sponsors were the School for the Blind and Visually Impaired, Aspire Inc., and the Fall Out Creative Community.



### “Heart of the Prairie”

(December 8, 2012—January 25, 2013)

Susan Melius’ nature photographs were paired with Bruce Roseland’s poetry for this exhibit, which captured the daily feelings and experiences of life on the prairie. The photos and poems are published in the artists’ new book, entitled “Church of the Holy Sunrise.”

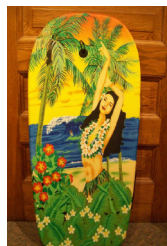




## The Dacotah Gallery

### “I Hate Winter Surfin’ Show”

(January 10—March 1)



“I Hate Winter Surfin’ Show” featured images of west coast and Hawaiian surfing scenes captured by amateur photographer, John Eichinger of Aberdeen. In addition to the many breathtaking water and surf images, Eichinger included some of his original surf boards, Hawaiian shirts, and surfing books to provide a colorful visual history of this ancient water sport. The show was popular with winter crowds anxious to think of warmer times.



### “Simmons Art Celebration”

(March 8 — May 14)



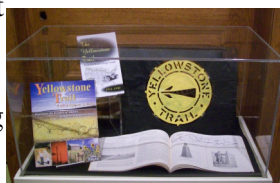
This show by students in Ross Hettinger’s Simmons Middle School art classes complimented the Children’s Exhibits in the nearby Helen Bergh room. The show was based on animal motifs, so students created paintings, contour drawings and multicolored designs within that theme.



### “Driving the Yellowstone Trail”

(June 9 — November 9)

In 2012, the Yellowstone Trail marked its 100th anniversary, and this exhibit examined the trail’s coast to coast construction through 13 northern states. Included were surveying equipment of the day, original photographs and a 50 foot map of the trail’s Plymouth Rock to Puget Sound route through the Yellowstone Park region. This ushered in the family driving vacation.



## Christmas Tree Lane 2012

(November 19—December 31)

The ninth annual Christmas Tree Lane exhibit filled the conference room, Helen Bergh Room, and the Dacotah Gallery with beautifully decorated trees and wreaths provided by individuals and groups from the Aberdeen area.

Food donations for the Salvation Army food panty were collected as part of the exhibit.



Land of Oz Questers

Brash ‘N Sassy Red Hatters



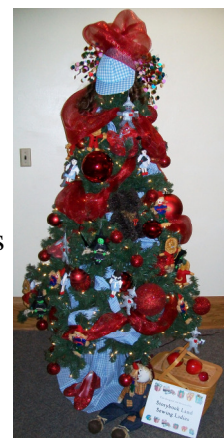
Avera St. Lukes Auxiliary



Storybook Land Sewing Ladies



Dream Reachers 4-H Club





## Second Floor Landing/East Hall

### “I Hate Winter Surfin’ Show”

(January 10—March 10)



This was a continuation of the John Eichinger’s surfing show in the Dacotah Gallery.

### “Art as Play” Permanent Art Exhibit

(March 13 — May 13)

This exhibit paired art from DPM’s permanent collection with artifacts used in play to create a whimsical look at child’s play.



Artwork that would capture a child’s eye like animal art, fantasy paintings, or pieces featuring children was coupled with games, toys, and figurines to capture the imagination of children of all ages.

### “Groovin’ in the 1960’s”

(May 25—July 29)

The 1960s were a time of violence, protest, peace, fashion, art, scientific discovery and a new sound from hard-driving music. Clothing, home appliances, decorating, news events, and music made up this exhibit. Also included was a year-by-year time line of people and events of the decade. The display offered a wonderful trip down memory lane for some and an opportunity to see how we lived “way back then” to others.



### “Let History Do the Talking — Brown County Towns”

(August 7 —October 21)

This exhibit took us back to our earliest history as towns were being established during and just prior to early statehood, when the area was being developed by the railroads.



The show examined both the founding and early development of each Brown County town, some of which flourish to this day, others now “ghost towns” of the prairie.

### “Threads of the Heart”

(October 23 — December 26)

Aberdeen’s chapter of the National Embroidery Guild offered its newest needlework creations for this exhibit. Members used crewel, cross-stitch, harddancer, French knotting, and many other forms of embroidery to create the pieces in this show, which carried a “heart” theme.



Each pattern used by the stitchers was designed by the American Heart Association with the idea that the profits from the sale of the patterns would help fund research in women’s heart health issues.

### “Faces of the Prairie”

(August 2012—2013)



DPM’s east hallway hosted this clever grouping of paintings, drawings, prints, and photographs of people of the prairie. These collection pieces made a unique show with its focus on the wide variety of faces —old, young, worn and weather—found on

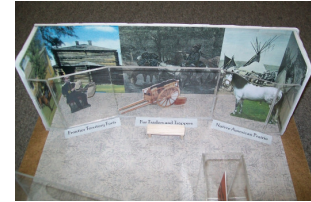
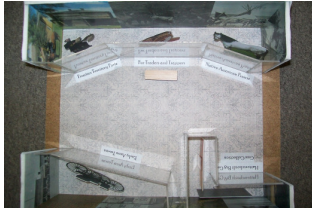
the people of the prairie.



## More Exhibit News

### Four Period Rooms Being Transformed into Large Walk-Through Gallery

The four period rooms on the first floor have been a traffic pattern challenge since they were installed in the 1970s. During 2012 plans were developed to redesign that space into one large walk through gallery, which would showcase the firearm collection of Fred Hatterscheidt. The floor plan for this new display is shown here.



Contractors began work in October removing existing walls and exhibit components.



~~~~~

### Pheasant Canteen Exhibit Moves

The Pheasant Canteen exhibit was moved from its first floor space to the second floor gallery that housed the Unforgettable '40's exhibit when the four period rooms were closed for remodeling. A new and larger door was installed so access to the maze galleries is now much easier, especially for moving the many large artifacts used in these rooms.



### Second Year for Children's Exhibits



The Lamont Gallery hosted the enchanted forest where art activities included leaf rubbings, a puppet theater, castle blocks and other magical activities.



The "Frontier Town Life Room" continued to occupy the adjoining three-room gallery. Here children could be shop keepers or have tea in the little playhouse.

### Pre-Historic Brown County Opens



The Prairie Diorama exhibit was closed for remodeling much of 2011 and the early part of 2012. When it re-opened it featured some of the pre-history of the Brown County area unearthed during a recent archaeological dig near Westport, SD. The walls now feature murals of a life-size woolly mammoth and a map showing possible routes used by the pre-historic tribes to reach this area.



The Native American Encampment in the Helen Bergh Room featured tipis, a camp fire, fish pond, wild corn and prairie plants. Native American dress up clothes were included to teach children and families about life in an early encampment. Visitors could also play gathering drums, make winter count "skins," use sewing cards, and decorate dance sticks.

This was the second of a three-year pilot program for exhibits targeted to the young child.

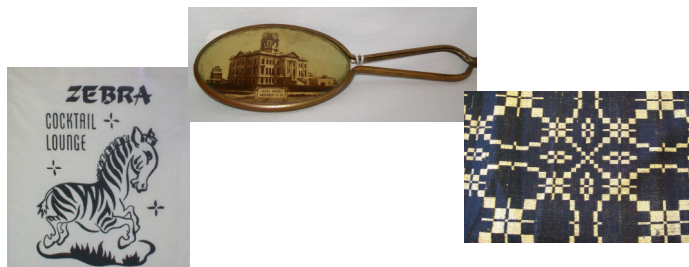


## Collection Department

### New Collection Pieces

Thirty-three donors added 154 artifacts to the collection during 2012. A few significant donations were a derby belonging to JLW Zietlow that came from London, an Army uniform worn in Desert Storm by Kendal Fischbach, a hand-woven blanket from the 1870's, a napkin from the Zebra Cocktail Lounge in Aberdeen, a small hand mirror with a picture of the courthouse on it, and numerous Snow Queen items from Jennifer Waddle, the 1991 Snow Queen.

Also added were letters from the Esche family to their son during the depression and stock certificate books from Aberdeen's Home Building & Loan Association in the 1930-40's.



### Managing the Collection

Work continues on the collection portion of the STEPS program, with most of the benchmarks in this program completed. Documentation for the 154 new items was completed (contracts and accession sheets), and 275 artifacts were added to Musecab, the old collection inventory program. To date 29,400 items are in the collection database. The new Past Perfect software is being installed and staff completed online training for the program in December. It is hoped that data can be transferred to this new program early in 2013 so we can begin using it.

Photographing the artifacts in room 302, the school and medical room, continues as does work in the archives.

### Permanent Art Collection Grows



"An Orderly Collapse" was created out of barn wood by Jacob Bosmoe for his "Day County" show. DPM purchased it for its art collection.

"Chases After Him," a piece of ledger art by Donald Monteaux was purchased for the collection from the "Straight Up Color" show by Mr. Monteaux.



"Four Seasons on the James River" is the title given to this silk painting created at the 2011 Granary Fine Arts show by instructor Ann Taeker and her students. She donated it to DPM in 2012.



Charles R Brewer painted a portrait of early Aberdeen resident Charles Howard. M. Patton Echols, great nephew of Howard donated the piece to DPM in 2012.

### Restoration Project

Money to restore this small Frank Ashford painting came from a grant from the state Questers organization. The piece was taken to the Midwest Art Conservation Center in Minneapolis where a team of conservation specialists would complete the necessary work.

When the canvas was removed from its stretcher, conservators found a second Ashford portrait on the same stretcher—also in need of repair. That work was funded by the DPM Foundation. Both paintings will be back at DPM in 2013.



## Granary Gifted to Brown County/DPM in 2012

John Sieh, founder of the Granary Rural Cultural Center, and the Granary board of directors, after careful and thoughtful consideration, made the decision to dissolve the Granary Corporation and gift the property and corporate assets to the Dacotah Prairie Museum through its parent organization, Brown County. Since the Granary opened its doors in 1994, DPM staff have supported and participated in the arts programming hosted there. For the past four years, DPM has administered the long-standing All Dakota High School Art Show, so the transfer of ownership seemed to be a natural fit and beneficial to both parties.

New programs were developed to utilize the Granary during the 2012 summer; these are noted below. Without the assistance of personnel from other county departments including maintenance, fairgrounds, highway, GIS (whose department head is a trained arborist,) and weed and pest control, DPM staff could not have hosted these events as easily or successfully as it did.

DPM made a few improvements in 2012 including painting the entire granary gallery exterior and the west side of Putney hall. New baseboard heaters were installed in the granary gallery, so both buildings are now heated and cooled. Additional work to be completed in 2013 includes finishing the painting on Putney Hall and some roof repair and shingling on the granary.

This generous gift opens new opportunities for DPM to expand its exhibit and program offerings during the summer season.



Remember the Fallen  
By Morghan Deiss  
Aberdeen Central High  
Best in Show 2012

## 2012 Granary Events

The 2012 All Dakota High School Art Exhibition attracted approximately 160 art students and teachers from schools in North and South Dakota despite its being held in Aberdeen for the third year in a row due to uncontrollable circumstances. Brad Ciavarella, Mitchell architect, was the keynote speaker. Workshop presenters were: Nick and Nicole Fischer, Jacob Bosmoe, Tim Steele, and Jennifer Deutsch. Vicky Bogart and Greg Blair served as judges for the event.

“Remember the Fallen” a drawing by Aberdeen Central student Morghan Deiss, was selected as Best in Show. Deiss received a \$500 cash prize.

# Granary Art Camp

Two sessions of Art Camp were held for children ages 8-12. DPM's Lora Schaunaman led the participants through sessions of drawing, printing, sculpture and drawing. The children also toured the sculpture gardens.



## Pampered on the Prairie

Area women came to the Granary in June for a day of pampering with food, flowers, books, massages and, of course, lots of art indoors and outside..



## Fall Festival

The first annual fall festival took place in September. Spinners, weavers, quilters, musicians, old time games, muzzleloaders, and birch bark canoes filled the campus as visitors wandered from booth to booth. Kids of all ages decorated pumpkins. The event closed the season.





## 2012 Holiday Ornament

DPM created its fourth holiday ornament using local landmarks as its theme. Images of the original Aldrich Park Band Shell, Melgaard Park Band Shell, Wylie Park Pavilion and Johnson Baseball Field were used. The Aldrich Band Shell and Johnson Field are no longer standing, but served the community as recreational sites for many years. The design is similar to the first three ornaments, and all are available in the Museum Gift Shop for \$12.95 each. Proceeds from these sales benefit museum exhibits and programs.



## Young Boys, Big Toys

DPM's parking lot and surrounding streets were filled with "boy toys" on the evening of August 1. There were race cars, law enforcement vehicles of all types, fire engines, classic cars, a huge John Deere tractor, a semi, and motorcycles for boys (and their parents) to sit in, climb on, and learn about. Each boy was given a "goody bag" containing stickers, models, etc. Rides in the barrel train were very popular as well. The event was a hit with the boys—young and not so young!



~~~~~

## DPM Decorates Local Events

### All Aberdeen Reads

Alexander Mitchell Library hosted author, Jamie Ford, whose book *Hotel on the Corner of Bitter and Sweet* was selected for the 2012 All Aberdeen Reads Event.

The book is a fictionalized account of the Japanese American experience during WWII. The exhibit decorated the "Meet the Author" event at the Ward Hotel.



### Historical Society Meeting

The Brown County Historical Society hosted an award ceremony and reception for the Pheasant Canteen Team. The group was selected to receive two national history awards from the American Association for State and Local History. A small canteen related display was created for the event.



### Jim Witter 60s Concert

The Aberdeen Arts Council hosted pianist Jim Witter for an evening of 60s music at the Civic Theater. DPM created a window display to decorate the council's office prior to the concert as well as a larger 60s exhibit to be used in the theater lobby the night of the concert.



## 2012 Financial Summary

<b>Brown County Funds</b>		<b>\$291,975.24</b>
<b>Aberdeen City Funds</b>		<b><u>\$12,000.00</u></b>
<b>TOTAL FUNDS AVAILABLE</b>		<b>\$303,975.24</b>
<b>Salaries and Benefits</b>		
Salaries	\$166,828.55	
Benefits	\$57,112.30	
<b>Total Salaries and Benefits</b>	<b>\$223,940.85</b>	<b>\$223,940.85</b>
<b>Operations</b>		
Insurance	2,300.55	
Cafeteria Flex Plan	100.00	
Rentals	3,312.00	
Books & Subscriptions	152.62	
Memberships & professional fees	1,025.00	
Janitorial supplies	916.85	
Shop	989.46	
Museum Departments	14,498.77	
Collection, Exhibit & Education cost		
Gas/Oil	136.47	
Office Expense		
Supplies	5,142.76	
Postage	504.26	
Copier	122.02	
Phone	1,103.28	
Internet	980.00	
Granary Expense	7,067.61	
Computer Equipment	4,297.11	
Travel/registration/Conference	222.50	
Granary Utilities	1,005.21	
Security	1,197.42	
Publicity	15,887.80*	
Repairs & maintenance	2,833.97	
Granary maintenance	6,923.23	
Machinery & Equipment	4,150.00	
<b>Total Operations</b>	<b><u>\$74,868.89,</u></b>	<b><u>\$74,868.89</u></b>
<b>Total Spent</b>	<b>\$298,809.74</b>	<b>\$298,809.74</b>
<b>Total Remaining end of year</b>		<b>\$5,165.50</b>

\*This category includes the \$12,000 from the city of Aberdeen