

Dacotah Prairie Museum

2013  
ANNUAL  
REPORT



## Our Mission

Preserving and sharing the stories of the Dakota Prairie and its inhabitants

## Our Vision

The Dacotah Prairie Museum, a non-profit, permanent learning center in service to all people, is committed to the continued growth of its collection of material evidence representing the ongoing history of its region. This collection will be used by present and future generations to study and interpret the lives and accomplishments of previous generations inhabiting the Dakota Prairie. Through these endeavors the Museum will continue to advance itself as a cultural, educational and economic asset to South Dakota.

## Our Values

**Respect:** For people, their stories, their artifacts

**Excellence:** In personal and institutional performance

**Achievement:** Through timely accomplishment of stated goals

**Responsibility:** To ourselves, to each other, to the institution and to the public

**Fairness:** In judgment and decision making

**Integrity:** In preservation and presentation

### 2013 Board of Trustees

Eric Vetter, President  
Heath Johnson, Vice President  
Kathy Sperry, Secretary  
Jan Erickson  
Alan Hawkinson  
Brian Kellar  
Jacie Schley  
Casey Weismantel

Duane Sutton (County Commissioner)

### 2013 DPM Foundation

Stacy Levsen, President  
Jason Pettigrew, Vice-President  
Dorothy O'Keefe, Treasurer  
Allen Gates  
Randy Grismer  
Carmel Heyd  
Nancy Clark-North  
Cindy Schick

---

### Museum Staff

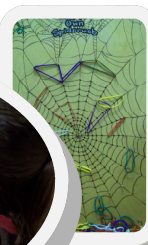
Sue Gates, Director  
Sherri Rawstern, Curator of Education  
Lora Schaunaman, Curator of Exhibits  
Jackie Ormand, Collection Manager  
Carol White, Office/Gift Shop Manager  
Marianne Marttila-Klipfel, Curatorial Assistant  
Dick Schooley, Custodian



Highlights from 2013



Christmas Tree Lane



Children's Exhibits



Fall Festival



Pampered on the Prairie



All Dakota Granary Fine Arts Show



Flight Reception



Granary Art Camp



Granary High School Art Exhibition



Squire Gallery Opening



# History of the Dacotah Prairie Museum

The idea for a museum in Aberdeen originated in 1938 when John Murphy, a Northern State College professor, and Marc Cleworth, a salesman, created the Northern South Dakota History Museum, which was housed in the Central building on Northern's campus.

This museum closed in 1941 when space was needed on campus to train WWII glider pilots. The nearly 500 artifacts collected were either returned to donors or placed in storage where they remained until 1970 when they were added to the collection of the new Dacotah Prairie Museum.

## A New Museum is Born

The idea of a museum resurfaced in 1963 when a group of past presidents of the American Association of University Women (AAUW) met to consider possible community projects for the group. By 1964 the AAUW committee, along with representatives of other community groups, had chosen a museum as their project and had begun looking for possible sites.

In April 1968, the Aberdeen Parks and Recreation Department offered the Anderson Recreation Center (now Senior Center) as a temporary home for a museum. The Museum's board of directors accepted the offer and, in 1969 opened the Dacotah Prairie Museum, but the search for a permanent site continued.

## The Museum Finds a Home

On March 11, 1970, Fred Hatterscheidt, a local businessman, offered the building at 21 South Main to the County for use as a museum. The County Commissioners accepted the offer and by mid-summer renovations to the building began.

On October 25, 1970, the Dacotah Prairie Museum opened the doors of its new home to the public. Governor Frank Farrar spoke at the opening ceremony.

In 1970 the Museum's exhibit area included only

portions of the first floor, as it shared the building with several other tenants. As the decade progressed, the Museum expanded its exhibit space to the entire first floor and half of the second. By 1980 the Dacotah Prairie Museum occupied the entire building. Staff and volunteers worked to ready new found spaces to accommodate staff, exhibits and collection storage.

## The 1980s and 1990s

During the 1980s and 1990s the Museum continued to define itself. A mission statement was adopted, and policies of operation were put into place. Staff numbers increased, as did the Museum's tax-supported budget. The Dacotah Prairie Museum Foundation was incorporated in 1985 to assist the Museum in raising outside funds to supplement the annual budget.

During these two decades, several professional assessments were conducted to help the Museum improve its collection management methods, maintain the integrity of its historic building, and strengthen its overall operations.

## 2000 and Beyond

Renovations to the building's exterior and its major first floor gallery spaces were the focus of work during the early years of this period. The feasibility of an expansion project to double DPM's size was explored in 2007—2008. Despite a positive response from the community, a down-turned economy postponed action on the project. To compensate, upgrades to existing spaces were made to maximize their effectiveness.

## Unexpected New Space

In 2012 John Sieh, founder of the Granary Rural Cultural Center, donated the Granary to DPM/Brown County. DPM plans to utilize the 2.3 acre rural facility from April—October for a variety of art and heritage related activities for audiences of all ages and interests.



## Director's Report

### *“Always Do Whatever’s Next”*

*~~George Carlin*

DPM’s year began with goals to complete the first floor gallery remodeling project, begin working with new collection software, expand the number of classrooms serviced by the new programs that were developed in 2012, and increase Granary usage. All staff were expecting a busy year.

Throughout the year, requests for DPM programs and exhibits came from new partners: the Aberdeen University/Civic Symphony, the NSU drama department, Kessler’s Grocery Store and the Aberdeen Chamber of Commerce. DPM created small exhibits for these groups to enhance special events they hosted. DPM also assisted long time partners Alexander Mitchell Library, Aberdeen Downtown Association and the city Parks and Rec Department with special exhibits. No request for assistance was refused, so an already busy year was even busier. Aberdeen and the region obviously view DPM as a vital historic reference. That, too, is one of DPM’s goals now met.

### Department News

The highlight of the exhibit department came in November with the formal opening of the Squire Gallery, the newly remodeled first floor space. This culminated a two year effort and completed the first floor makeover plans. Exhibit staff also installed seventeen short-term, in-house exhibits including the ever popular children’s exhibits, four shows at the Granary, and nine others at locations throughout the city.

Staff in the education department presented the new SD History Lessons each month to third and fourth grade students at Lincoln, Roncalli, Simmons, May Overby and O.M. Tiffany elementary schools.

A special reunion was planned to celebrate the twentieth anniversary of the Junior Docent program with invitations going to all program alumni. Those in attendance viewed class photos, banners, and

shared memories from that sixth grade experience. The new class of docents began their service training in September and their official duties in November.

Details of exhibit and education accomplishments can be found on subsequent pages of this report.

Collection staff began working with the long awaited new collection software, Past Perfect., which offers DPM the ability to create one all inclusive data base for department records. This greatly improves efficiency within the department and artifact access for all staff. Data on over 29,000 collection pieces has been transferred into Past Perfect to date.

### Building/Vehicle Maintenance

Repairs to DPMs elevator (new in 1976) became necessary and were completed. The elevator needs a complete modernization to bring it into compliance with current safety codes. This work is planned for 2014.

A fall hail storm damaged seven of ten window awnings installed during the building renovation of 2002—2003. Three awnings replaced in 2012 were strong enough to withstand the storm. Replacement costs were covered by insurance.

A new metal exterior door was installed on the building’s east side. The existing door would no longer shut tightly and was susceptible to random opening during periods of strong winds making it a security issue.

DPM’s 1989 van was retired and replaced with one used by the county’s Juvenile Detention Center. This van will offer more flexibility as it has three rows of removable seats unlike the old cargo only model.

### Grants Received

The 3-M Foundation awarded DPM a \$3250 grant; \$2000 for the children’s exhibits and \$1250 for Granary programming in 2014.

## Granary Activities

The Granary galleries were staffed on weekends from 1pm—4pm June through September for the first time since the facility has been under DPM management. This was an effort to attract more visitors to the site. These additional work hours were incorporated into the existing weekend shift rotations. At the close of the season, staff decided to discuss expanding the open hours for summer 2014.

The Granary Gallery hosted three shows: The All Dakota Art Invitational; a display by Nick and Nicole Fischer, and finally quilts from the DPM collection.

Art Camp, Pampered on the Prairie, and the Fall Festival, all introduced the previous year were held a second season.

The painting of the exterior of Putney Hall was completed, and the Granary and gazebo were reshingled.

The existing Granary billboard was updated and reinstalled on its site on Highway 12 west of Groton. Staff continues to develop an overall plan of new and improved directional signage on all roads leading to the Granary. Nick and Nicole Fischer and students participating in the high school art event painted a large scale mural, which will be installed on the west side of the Granary parking lot to help identify the property.



## Personnel News

Jan Erickson and Casey Weismantel were appointed to their first terms on the DPM board, and Jacie Schley completed her second and final three year term. Brian Kellar resigned his position due to an employment relocation to Nebraska. Constance Woods received the Peg Lamont Volunteer Service Award. Constance served as receptionist and docent during her two years at the museum. She moved back to her home in Taiwan in the spring of 2013. Stacy Levsen and Randy Grismer completed service on the Foundation Board.

Aliza Rux, a 2013 graduate of Aberdeen Central High School, worked full time during the summer season assisting with exhibits and programs. She had been a volunteer throughout her senior year.

## Restoration of Ashford Paintings

DPM received grant dollars in 2012 from the SD Questers organization to restore a small oil painting by Frank Ashford. A second canvas was discovered hidden beneath the first that also needed cosmetic work. The DPM Foundation funded restoration work on the second piece. New framing for both canvases was funded by the Yellow Brick Road Questers group of Aberdeen. The two pieces were returned to DPM and unveiled to the public in July. Shown here with the newly restored and framed pieces are DPM director Sue Gates and Yellow Brick Road Quester members Evelyn Nikolas and Jean Weber.





## Education Department

### Program Usage

DPM staff have presented programs to students in every elementary school in Aberdeen either in their classrooms or at the museum during field trips. The popular third grade Afternoon Into the Past was presented 15 times to 360 local children and 5 times to 163 children from the area. Staff visited schools 57 times to present the new Aberdeen History lessons to 1,083 students. See page 11 for total impact of DPM programs within the schools and the community.

The Junior Docent program involving students in the Roncalli sixth grade classes marked its twentieth anniversary in 2013. Since 1993 these students have shared 14,826 hours of volunteer service with the DPM education department.

Outreach programs were shared at the ARCC Christmas Celebration, Kessler's Oktoberfest, and with numerous clubs and organizations in the area.

### History Camp

History Camp marked its 17th year with 60 day campers attending the 2013 sessions. Since 1996 when the program started, 1021 students have attended the camp, which is held at Centennial Village. Campers spend the day doing old fashioned chores, playing old fashioned games and learning about the activities that once filled the historic buildings at Centennial Village.

Walking the rails



Writing with a quill pen

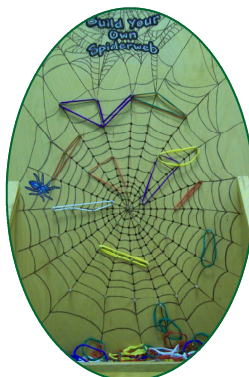
### 2013 Children's Exhibits

Two traveling exhibits from the Discovery Center in Pierre, SD, were featured during February and March, the children's exhibit season. The exhibits, "Animals as Architects" and "Light and Color," provided numerous opportunities for fun and learning through eighteen free standing learning stations, each with a different theme.

Group tours of these exhibits were enjoyed by 21 area pre-schools and/or daycare facilities who brought a total of 260 young visitors. The displays attracted many young families who visited numerous times.

This was the final year in the three-year pilot program launched to determine if an area devoted solely to children was needed and could be successful if pursued annually. Results were resoundingly positive—Aberdeen area children and their families and/or care givers will use and enjoy these types of offerings and appreciate having them available during when outdoor play becomes a challenge due to our extreme weather conditions.

Children's exhibits will now become a permanent fixture on the museum's schedule.





## DPM Volunteers

Evelyn Blum  
Edythe Clark  
Jan Erickson  
Allen Gates  
Randy Grismer  
Mary Jane Hansen  
Alan Hawkinson  
Carmel Heyd  
Bill Hild  
Mary Jo Hild  
Carole Jansen  
Heath Johnson  
Doug Klipfel  
Laura Kramp  
Marilyn Lahr  
Stacy Levens  
David Losure  
Heidi Losure  
Annikki Marttila  
Evelyn Nikolas

### 2013 Volunteer Hours

Reception	1,107
Board Members	484
Junior Docents	505
Education	44
Clerical	19
Collection	167
Maintenance	20
Exhibits	60
<b>Total</b>	<b>2,406</b>

*At current minimum wage of \$7.25  
hr., hours worked by volunteers are  
valued at \$17,443.50.*

Dorothy O'Keefe  
Jason Pettigrew  
Joyce Pfeiffer  
Jean Rahja  
Chris Rawstern  
Terry Rawstern  
Caroline Sahli  
Luke Schaunaman  
Neil Schaunaman  
Lois Schleder  
Cindy Schick  
Jacie Schley  
Kathy Sperry  
Noelle Stubbe  
Eric Vetter  
Pat Waltman  
Dean Webb  
Kathy Webb  
Betty Werth  
Constance Woods  
Ramona Woodman

## 2013 -14 Junior Docents

### Mr. Larson's Class

Tori Eschenbaum  
Jori Ewart  
Jacob Goebel  
Abby Hanson  
Emily Kokaes  
Jonah Kost  
Hannah Kraft  
Jared Loecker  
Madelyn Martin  
Antony Martinez  
Kelsey Peterson  
Ian Pharris  
Skyler Reecy  
Fionualla Rigg  
Sydney Rosebrock  
Megan Titus  
Riley Weinmeister  
Mariah Winegar  
Brayden Zachow

**Celebrating  
20 years of service  
by our sixth  
graders from  
Roncalli.**

**Junior Docents Shared  
14,826 Service Hours  
Since 1993**

### Mrs. Neuendorf's Class

Noah Barnett  
Jordon Berger  
Erica Carda  
Michael Garofalo  
Christina Grettler  
Victoria Heier  
Jenna Helms  
Harrison Kiefer  
Abbie Kline  
Hannah Kuck  
Ellie Litzen  
Vanessa Maina  
Kaleb Norton  
Jacob O'Keefe  
Reagan Reede  
Allison Schock  
Chris Swallow  
Elizabeth Wagner  
Madison Wetz

### Foreign Countries and Canadian Provinces Represented by Visitors During 2013

Australia	Romania
Azerbaijan	Russia
Cuba	Saudi Arabia
England	Serbia
Germany	South Africa
Holland	South Korea
Honduras	Spain
Japan	Taiwan
Kazakhstan	Tajikistan
Kosovo	Thailand
Kyrgyzstan	Ukraine
Latvia	Venezuela
Mexico	Virgin Islands
Netherlands	<b>Canadian Provinces:</b>
New Zealand	British Columbia
Norway	Saskatchewan
Philippines	
Puerto Rico	

### Visitors Represented 46 States and The District of Columbia in 2013

Alabama	Minnesota	Texas
Alaska	Mississippi	Utah
Arizona	Missouri	Vermont
Arkansas	Montana	Virginia
California	Nebraska	Washington
Colorado	Nevada	West Virginia
Florida	New Jersey	Wisconsin
Georgia	New Mexico	Wyoming
Hawaii	New York	
Idaho	North Carolina	and
Illinois	North Dakota	Wash. D.C.
Indiana	Ohio	
Iowa	Oklahoma	
Kansas	Oregon	
Kentucky	Pennsylvania	
Louisiana	Rhode Island	
Maryland	South Carolina	
Massachusetts	South Dakota	
Michigan	Tennessee	



### Volunteer Award

Constance Woods, center, was presented the 2013 Peg Lamont Volunteer Service Award for her outstanding service to the DPM. She is shown here with Lora Schaunaman, Curator of Exhibits, and Sue Gates, Director.



### Recycling Project

DPM collected plastic shopping bags to make mats like this to use at the Granary. Bags were cut into strips, which were knotted together and crocheted into 18" x 24" mats. All this was completed by a small group of volunteers.

The mats served as great moisture barriers for Art Camp students sitting on the grass to sketch and draw.

## 2013 DPM & GRANARY ATTENDANCE SUMMARY

<b>DPM Walk-Ins</b>			<b>10,503</b>
<b>In-House Programs</b>	<b># Events</b>	<b># Participants</b>	
<b>Tours</b>			
Local Schools	57	1,083	
Out of Town Schools	21	461	
Adult Groups	12	285	
Scouts	4	50	
Children's Museum	21	260	
<b>Afternoon Into The Past</b>			
Local Schools	15	360	
Out of Town Schools	5	163	
In House Programs	18	309	
Receptions	6	305	
Exhibit Opening	1	70	
Meetings	65	896	
Training	20	90	
Volunteer Lunch	1	30	
Walking Tours	4	43	
<b>Total In-House</b>	<b>249</b>	<b>4,305</b>	<b>4,305</b>
<b>Granary Walk-Ins</b>			<b>482</b>
<b>Outreach</b>			
School Visitations	253	5,742	
Speeches	14	291	
Exhibits	40	30,957	
History in a Trunk	33	628	
Education Kits	6	130	
<b>Special Events</b>			
Brown County Fair	2	22,100	
History Camp	6	60	
Granary Art Exhibition	24	224	
Granary Fall Festival	1	150	
Granary Programs	17	268	
Christmas Celebration	1	200	
Octoberfest	2	1,560	
<b>Total Outreach</b>	<b>395</b>	<b>62,310</b>	<b>62,310</b>
<b>Total Programs</b>	<b>644</b>	<b>66,615</b>	
<b>Total Attendance</b>			<b>77,600</b>

## ATTENDANCE TOTALS 2000—2013

	2000	2001	2002	2003	2004	2005	2006	2007	2008	2009	2010	2011	2012	2013
<b>DPM</b>														
WALK-INS	8,165	9,132	9,193	7,475	8,764	9,770	10,030	10,324	9,008	9,660	9,366	11,054	11,106	10,503
IN-HOUSE EVENTS	235	222	288	202	252	250	306	271	296	240	273	274	253	249
PARTICIPANTS	4,482	4,665	6,117	4,664	5,074	5,341	5,460	4,712	6,234	4,489	5,686	4,962	4,592	4,305
<b>DPM OFF-SITE</b>														
EVENTS- EXHIBITS	406	364	311	324	289	269	239	246	193	266	257	315	334	353
PARTICIPANTS	42,073	45,720	66,351	69,706	56,018	54,018	60,534	59,356	50,903	45,128	57,730	55,633	62,572	61,668
<b>GRANARY</b>														
WALK-INS														482
EVENTS														42
PARTICIPANTS														642
<b>TOTAL EVENTS- DPM &amp; GRANARY</b>	641	586	599	526	541	519	545	517	489	506	530	589	587	644
<b>OVERALL TOTAL PARTICIPANTS</b>	54,720	59,517	81,661	81,845	69,856	69,129	76,024	74,392	57,173	59,277	72,782	71,649	78,270	77,600



# Exhibit Department

## The Lamont Gallery

### Children's Exhibit— *"Light & Color"*

February 8—April 8

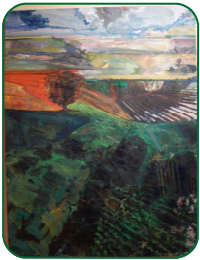


This is one of two children's exhibits from the SD Discovery Center in Pierre. Eighteen free standing stations offered varied activities to help kids understand more about the science behind light and color in prisms, rainbows, holograms, color blending and periscopes.



### "Oscillating Landscapes"

(April 19 –June 16)

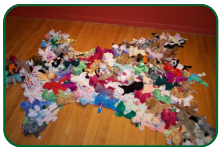


Inspired by his rural SD farming background, Paul Peterson uses robust color and thick paint to create his semi-abstract paintings reflecting the beauty of the land, sky, and the prairie. This intimacy with the land and the farming lifestyle helps connect his art with the average South Dakotan's life experiences.



### "Accumulations"

(July 1—August 11)



NSU art professors Greg Blair and Sara Christensen Blair approach 3-D art and sculpture in different ways in this combined show. Sara uses her collections as objects altered into ideas about life, environment and culture.

Greg uses wood and other materials to create art that makes political and social comments about life, thus allowing the viewer to think about their own choices in art and life.



### "Watercolors"

(August 24—October 4)



Kathy Miller, a Minnesota artist, paints with passion the beauty of nature, striving to capture the fleeting moments of time when nature's light changes the ordinary into something extraordinary. She included close-up florals and broad, panoramic landscapes in this dazzling show.



### "The Road Less Traveled"

(October 8—November 17)



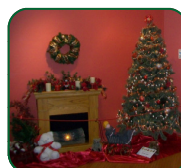
"The Road Less Traveled" featured photographs taken by Michaela Glugla of Aberdeen. She discovered her passion for photography on a trip to Australia where she snapped hundreds of pictures. She vowed to continue this and, upon returning home, Michaela pursued a degree in Professional Photography Technology to hone her craft. This show featured views she found in her travels on the area's back roads and country paths.



### "A Gingerbread Extravaganza"

(November 23—December 20)

Seventeen gingerbread creations including villages, stores, houses and castles graced the Lamont Gallery for Christmas. This popular display helped put visitors in the holiday mood.





## The Dacotah Gallery

### “Crystal Dreams & Glistening Memories”

(January 5—February 4)

This was the theme for 2013 Snow Queen display, which filled the Landing and Dacotah Galleries along with the Helen Bergh room with gowns,



crowns, event memorabilia and the official Snow Queen portraits from 1947 through 2012.

### “Down Home”

(February 15— April 5)



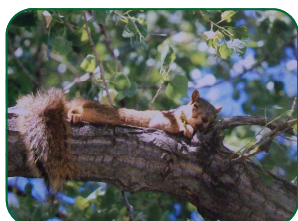
Jay Hopkin's uses her colorful oil paintings to connect with her North Dakota roots and the natural world. She achieves her rich colors and deep textures by layering oil glazes or collaged papers with acrylic paint, which create an art piece filled with emotion and subtle beauty.



### “South Dakota Dreams”

(April 10—June 1)

Israel Mickelson offered eighteen photographs in this display to present the wide gambit of weather, land and animals/birds in the area. His photos are unplanned and unstaged; they simply capture a very intimate view of our natural world.



### “Family in Focus: Captured Moments”

(July 16—September 18)



This exhibit by Marianne Marttila Klipfel featured thirty one black and white photographs that explore the wisdom, life-styles and events that can typically be associated with family life. Weddings, funerals, children playing, and community social events are some of the many unscripted moments captured in this show.



### Christmas Tree Lane

(November 23—December 29)

The tenth annual Christmas Tree Lane featured twenty five trees and eleven wreaths decorated by local and area clubs, organizations and individuals. This popular exhibit was inspired by the annual Christmas tree exhibit at the State Capitol in Pierre and continues to attract new participants each season.

Avera St. Luke's Pink Ladies



SAI Music Fraternity

Shakespeare Club



## Second Floor Landing/East Hall

### Crystal Dreams & Glistening Memories™

(January 4—30)



Snow Queen portraits and festival memorabilia of all types were incorporated into this popular display, which filled the landing and Dacotah Gallery during the month of January.

### “Fun & Games”

(February 10—May 1)

Vintage board games from the DPM collection were showcased in this exhibit. Games from the teens through the 1980s were included.



Many visitors used this table top board to enjoy a game or two of checkers. Visitors also had the opportunity to test their luck with SD trivia using questions from the game of the same name.

### “Horse Hair Pottery: Surface Design Discoveries”

(May 11—July 7)

Deb Burckhard Messer, a potter from Rapid City, brought 31 pieces of her horsehair pottery to showcase in this exhibit which was divided between the landing and Dacotah Gallery spaces.



To create the unique finish, horsehair is gently placed on pottery that's fresh from the kiln. Heat from the vessel curls and kinks the hair, so it leaves a black carbon trail on the surface of the piece.

### “Recorded for History”

(August 1—October 15)

Vintage cameras and photographs from the DPM collection were the focal points of this exhibit.

A stereo camera, a twin lens reflex camera, and the versions of the popular Kodak Brownie Box camera were featured along with the old photos, cabinet cards and tintypes to trace the history of photography from its earliest formats to today's digital technologies.



### “Stitching Around the World”

(October 25 — December 27)

During the past year, members of the Aberdeen chapter of the National Embroidery Guild created the 47 pieces included in this show. Each piece used a stitch type that originated elsewhere than the US, such as Casalguidi embroidery from Italy, Hardanger from southwest Norway, and Blackwork in England.



Knowledge of these and other intricate stitches are being saved for the next generation of stitchers through the efforts of groups like this.

### “Outside Looking In”

(November 18—December 20)



Photography students from Aberdeen Central High School created this exhibit as a class project. Hoping to capture the style and personality of favorite teachers, students interviewed and photographed them in their classrooms or offices. An “old school” black and white photo was paired with a color digital photo to contrast photography types. The interviews were used to create the label text. Students not only created the art, but also hung the show and were responsible for show publicity.



## SQUIRE GALLERY OPENS



The final upgrade to the museum's first floor exhibits area was completed during the past year. The goals of this major renovation project were to provide a more suitable visitor experience through a larger viewing space as well as a new exhibit featuring the firearm collection of Fred Hatterscheidt. By removing walls and the false ceiling, the original four-room format was transformed into a spacious walk-through gallery, which immediately created the desired openness.

Once construction was complete, work on "Opening the Dacotah Frontier," the gallery's premier exhibit, began. The weapons, dating from 1873 to the 1960s, were used to compliment the storyline, which takes the viewer from the era of territory's earliest fur trappers/traders and Native Americans through to the European settlement of the new towns created by the railroad's westward expansion. The display's final vignette used Hatterscheidt's hunting rifles along with photos and memorabilia from his worldwide hunting trips to introduce the adjacent Wildlife Gallery that showcases trophy animals from these hunts.

The Squire Gallery, named in honor of Sally and Ka Squire Jr., whose generous donation funded this project, was formally opened on November 19, 2013.



## FLIGHTS INTO HISTORY

"Flights Into History" opened in the Helen Bergh Room on October 10, 2013. The exhibit was created to coincide with a concert by Aberdeen's University/Civic Symphony featuring a piece commissioned to commemorate the 100th anniversary of the Wright Brothers successful flight at Kitty Hawk.

Brown County's aviation history was incorporated into the display, which also featured 18 model planes including the earliest Wright Flyer and the Vietnam era U2 spy plane. All planes were suspended from the ceiling in order to "fly" in the room's natural air movement.



The Wright Flyer



## "SUNRISE SOLITUDE"



In 1988 the doctors of Aberdeen's Internal Medicine Associates commissioned local artist, D. George Prisbe, to create a work measuring 3.5 feet by 16 feet to hang in their waiting room area. Prisbe proposed two options to the doctors, a scene depicting the Samuel Ordway Memorial Prairie near Leola or a James River landscape. The doctors chose the prairie, and "Sunrise Solitude," was the result.

In 2013 the doctors decided to redecorate their waiting area and offered the painting to DPM. Staff accepted the generous donation and hung the beautiful piece in the gift shop, making it easily available for viewing by all museum visitors.



## Collection Department

### New Collection Pieces



Sixty three donors added 417 artifacts to the DPM collection during the past year. Among these were a trunk from the family of O.E. Hundstad, a Norwegian immigrant who settled near Bath in the 1880s; match books from the Star Café and the Capitol Café and Lounge in Aberdeen; a 1981 Sharp CE-150 pocket computer; and a rack for candy made in Aberdeen at the Ward Owsley Candy Company.



Also of interest is a quilt made in the 1940s by members of the Pasque Troop. This piece belonged to Martha Emaline Zietlow, granddaughter of JLW Zietlow. This donation came from Martha Bowden, niece of Martha Zietlow.



Numerous documents were also accepted including records from Aberdeen's Monday Musicales Club; the Brick Family History; and a few pieces from the Home Building & Loan Association, an early Aberdeen company.

At year's end 29,811 artifacts in the collection have been included in the ongoing inventory.

### Managing the Collection

The existing inventory database was transferred successfully from the DOS based Q&A program to the new Past Perfect 5.0 collection software, a much more sophisticated and useful technology. All staff enrolled in online training to become proficient in this new software, which can be used in all departments for record keeping.

With Past Perfect a digital image can be attached to each collection record; staff has transferred existing photos to Past Perfect and is creating new images for artifacts not previously photographed.

### Additions to the Art Collection



"Shawl Dancer" was created by a former participant in the high school Granary show and purchased from the show by Marcia Miller who donated it to DPM this past year. It is a 3-D resin sculpture.

"Turquoise Organic Shape" was purchased from potter Deb Burckhard Messer following her show in the Dacotah Gallery.



Israel Mickelson was another Dacotah Gallery artist during 2013. This photograph, "Young Owl" was purchased from his show "South Dakota Dreams."

Twelve pieces were added to DPM's art collection during the year.



# WHAT HAPPENED AT THE GRANARY?

## EXHIBITS

The Granary Rural Cultural Center became the center of art and recreation activities from June through September, with special programs planned for audiences of all ages. Galleries were staffed on weekends to welcome visitors from near and far to the beautiful country campus.

Weather forced the April High School Art Exhibition to be held in Aberdeen at the ARCC for the fourth year. A special thank you is extended to our friends at the ARCC who made room in their facility for this two day event.

The All Dakota Invitation Art Show was held after a hiatus of many years. This show attracted 57 artists who shared 147 pieces for the show. Numerous prizes were awarded with Aberdeen artist, Betty Sheldon, taking the "Best In Show" award.

Nick and Nicole Fischer of Aberdeen were the featured artists in July and August. This seventy-one piece show with its universal themes of nature and family was well suited to the Granary galleries.

Quilts from the DPM collection were featured in the final gallery showing of the season in an exhibit called "Tradition and Beauty." Nineteen of DPM's most significant quilts were showcased in this popular display of folk art.

## CAMPUS IMPROVEMENTS

Two major improvement projects were completed during the 2013 season. Painters finished the exterior of Putney Hall. The west side of the building was completed in 2012 along with the Granary building. The shingles were replaced on the Granary and gazebo. The two buildings now have fresh, welcoming facades.

### Granary Art Camp

Two sessions of Art Camp were held for children ages 8-12. DPM's Lora Schaunaman led the participants through sessions of drawing, printing, sculpture and drawing. The children also toured the sculpture gardens.



### Pampered on the Prairie

Area women came to the Granary in June for a day of pampering with food, herb gardening, fashion eyewear, Zumba, of course, lots of art indoors and outside.



### Fall Festival

The second annual fall festival took place in September and closed the 2013 season. Old time music, crafts, food, and fun filled the day as visitors wandered from booth to booth.



### All Dakota Best In Show



Betty Sheldon's  
"Offering  
Tobacco"

### High School Best In Show



Faith Naasz'  
"Time Flies"

### Nick & Nicole Fischer Show



Nick's Couple  
Sharing

Nicole's  
Observing & Absorbing



## DPM PROVIDES EXHIBITS FOR OTHERS

### All Aberdeen Reads

David McCullough's book "Mornings on Horseback" was Alexander Mitchell Library's choice for its April community reading project. The book outlined the early days of Theodore Roosevelt. DPM created two small vignettes to depict his Boston apartment and a SD Badlands campfire scene, for the culminating event held at the old Milwaukee Depot.



### NSU Summer Theater at Ft. Sisseton



For one month each summer Northern State University theater staff and students present summer stock productions at Ft. Sisseton. One of the plays performed during 2013, "The Friendly Hour," followed a women's club from its inception in 1934 to its final meeting in 2007.

The women progress from young marrieds to senior citizens over the course of the play, and the audience experiences how they deal with issues of the day from rural electrification to a diagnosis of breast cancer.

DPM supplied an exhibit of items referenced in the production to illustrate some of the many societal changes that affected the lives of women during the seventy year timeframe of the play.



### Central High -Bethesda Community

Military uniforms, a 48 star flag, propaganda posters, maps, and other artifacts from WWII were used in an exhibit about Brown County's involvement in the Great War that traveled to two locations during the year. Central High School hosted it in March, and residents of the Bethesda Retirement Community enjoyed it beginning in May. These two audiences, although of different generations, enjoyed seeing the exhibit. One could learn about the long ago war; the other could remember their long ago war experiences.



### The Ward Hotel Ballroom



The annual mystery dinner theater entitled "Who Killed My Sweetheart" took place in February at the Ward Hotel. DPM provided an exhibit of clothing and artifacts for guests to enjoy. This is a fundraiser for the Aberdeen Downtown Association.

### Other Small Outreach Exhibits

- "Technology Old & New" for Alexander Mitchell Library
- "Buildings and Businesses" for the Aberdeen Chamber of Commerce annual Abby Award Banquet
- "Aberdeen Railroads" for the SD Nursing Convention
- "All Things German" for Kessler's Wylie Park Oktoberfest event
- "Railroad Depots and Other Buildings" for New Tec Technology Education Center

## 2013 Financial Summary

<b>Brown County Funds</b>		<b>\$314,367.35</b>
<b>Aberdeen City Funds</b>		<b><u>\$12,000.00</u></b>
<b>TOTAL FUNDS AVAILABLE</b>		<b>\$326,367.35</b>
<b>Salaries and Benefits</b>		
Salaries	\$177,419.34	
Benefits	\$61,008.38	
<b>Total Salaries and Benefits</b>	<b>\$238,427.72</b>	<b>\$238,427.72</b>
<b>Operations</b>		
Insurance	2,664.40	
Cafeteria Flex Plan	155.20	
Rentals	5,017.00	
Books & Subscriptions	99.03	
Memberships & professional fees	1,045.00	
Janitorial supplies	941.66	
Shop	198.29	
Museum Departments	7,977.61	
Collection, Exhibit & Education cost		
Gas/Oil	33.77	
Office Expense		
Supplies	2,266.22	
Postage	655.10	
Copier	173.42	
Phone	646.83	
Internet	190.00	
Granary Expense	4,155.66	
Computer Equipment	4,006.46	
Travel/registration/Conference	587.70	
Granary Utilities	1,931.62	
Security	1,594.20	
Publicity	18,049.38*	
Repairs & maintenance	21,330.91	
Granary maintenance	10,991.90	
<b>Total Operations</b>	<b><u>\$84,711.36</u></b>	<b><u>\$84,711.36</u></b>
<b>Total Spent</b>	<b>\$323,139.08</b>	<b>\$323,139.08</b>
<b>Total Remaining end of year</b>		<b>\$3,228.27</b>

\*This category includes the \$12,000 from the city of Aberdeen