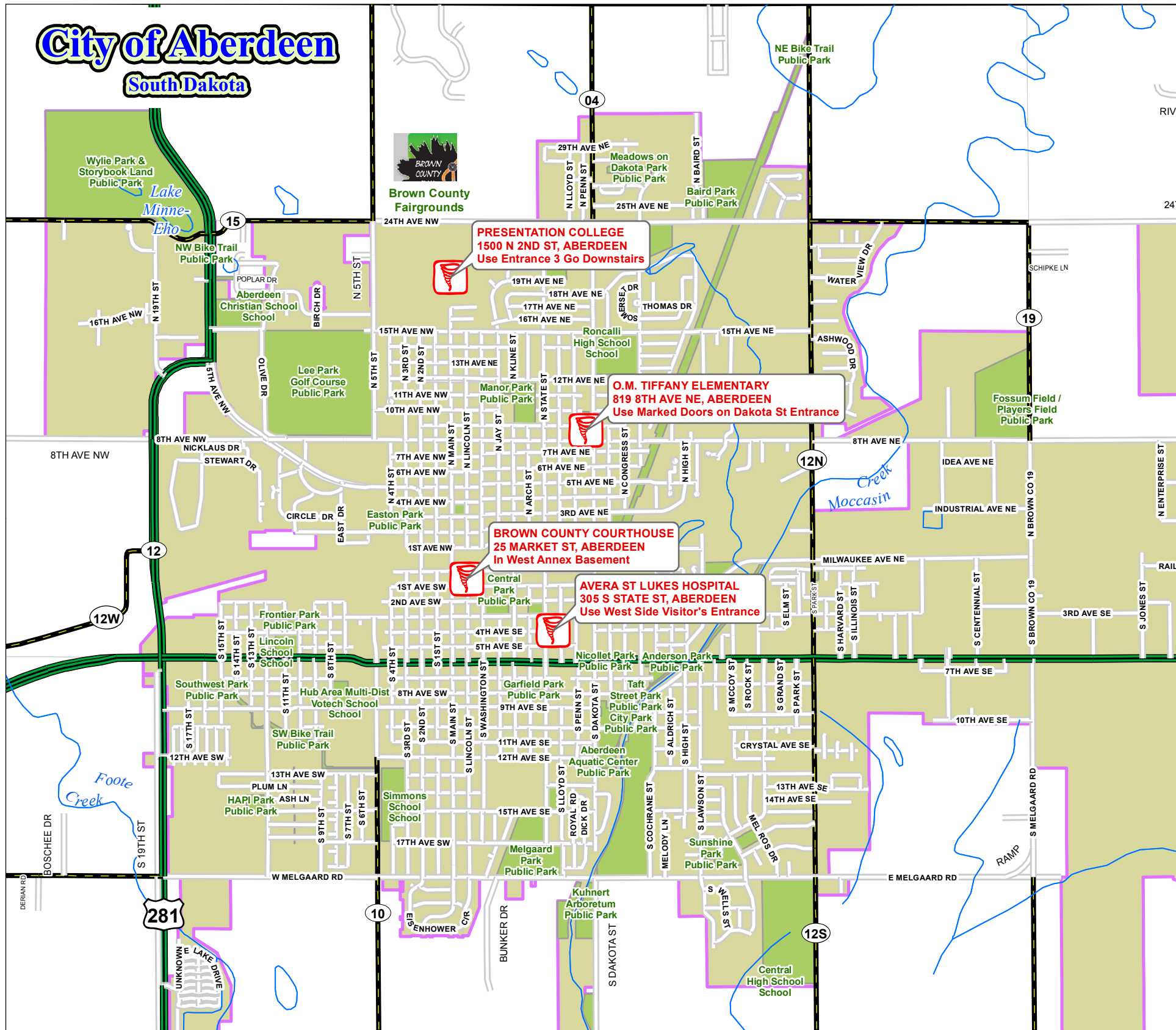


City of Aberdeen

South Dakota



- ## SEVERE SUMMER WEATHER STORM SHELTER LOCATIONS
- ### CITY OF ABERDEEN
- AVERA ST. LUKE'S HOSPITAL
305 S State St
Use West Side Visitor's Entrance.

~~~~~
  - BROWN COUNTY COURTHOUSE  
25 Market Street  
Located in West Annex Basement  
Use Doors on West or Handicap Entrance on North

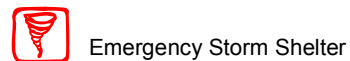
~~~~~
 - O.M. TIFFANY SCHOOL
819 8th Ave NE
Use Marked Doors on Dakota St Entrance.

~~~~~
  - PRESENTATION COLLEGE  
1500 N 2nd St  
Use Entrance #3 off N 2nd St, Go Downstairs
- OTHER AVAILABLE SHELTERS WITH SPECIAL HOURS:
- FEDERAL BUILDING  
6 AM TO 5 PM Monday-Friday (No Holidays)
  - NORTHERN STATE UNIVERSITY  
Other Than School Time Opened by Security
- ### CITY OF GROTON
- GROTON HIGH SCHOOL  
125 E 4th Ave  
Use South Doors
- ### CITY OF FREDERICK
- FREDERICK SCHOOL  
Main St  
Use South Doors



## EMERGENCY STORM SHELTERS MAP

LAST UPDATED:  
06/02/2014



### MAP LEGEND

- Incorporated City Limits
- Brown Public Places
- Brown Rivers and Streams
- State Highway
- County System Road
- City Streets



Brown County, SD GIS Dept  
Scott Madsen, GIS Coordinator  
25 Market St, Aberdeen, SD 57401  
(605) 626-4023, [www.brown.sd.us/](http://www.brown.sd.us/)  
Map Created In ArcGIS 10.2.1 using ArcMap  
Original Publication Date: July 2009